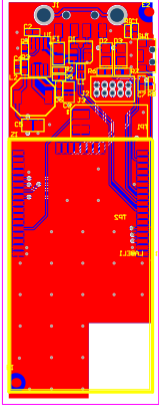




64.907 (mm)



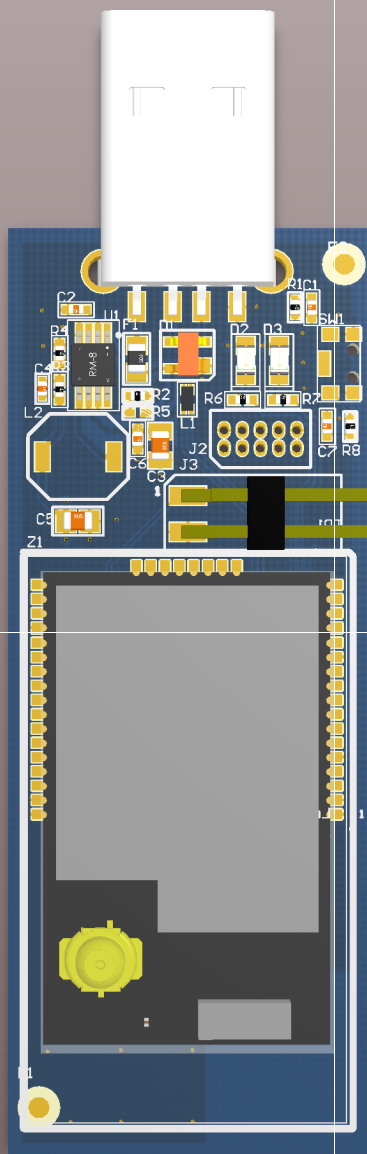
25 (mm)





Atmel **AVR**

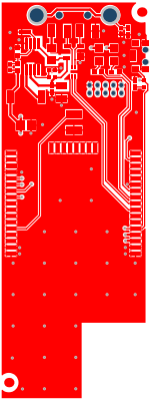
PCBA LABEL





Atmel® AVR<sup>®</sup>

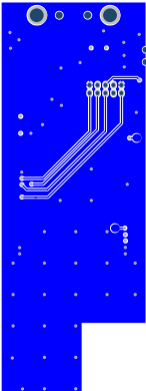
PCBA LABEL











# Component list

Bill of Materials Print For Variant [PS] of Project [USB Carrier Board.PrjPCB] (No PCB Document Selected)

Source Data From: USB Carrier Board.PrjPCB  
 Project: USB Carrier Board.PrjPCB  
 Variant: PS



Report Date: 10/17/2013 7:48:01 PM  
 Print Date: 10/17/2013 7:47:59 PM

#	Designator	Quantity	Value	Manufacturer	MPN	Description
1	C1	1	4.7n			Ceramic capacitor, SMD 0402, X7R, 25V, +/-10% (de35287)
2	C2	1	47p			Ceramic capacitor, SMD 0402, NP0, 50V, +/-5%
3	C3	1	10uF	Murata	GRM21BR61A106KE19L	Ceramic capacitor, SMD 0805, X7R, 10V, 10%, (de19441)
4	C4	1	22pF	Kyocera-elco	CM05CG220J50AH	Ceramic capacitor, SMD 0402, NP0, 50V, +/-5% (de19768)
5	C5	1	22u/10V	tdk	C2012X5R1A226M0.85	Ceramic capacitor, SMD 0805, X5R, 10V, ±20%
6	C6, C7	2	100n	Kemet	C0402C104K4RACTU	Ceramic capacitor, SMD 0402, X7R, 16V, +/-10%
7	D1	1	PRTR5V0U2X	Philips	PRTR5V0U2X	Double rail-to-rail USB ESD protection diode (de35444)
8	D2	1	EL17-21UYC/A2	Everlight	17-21UYC/S530-A3/TR8	LED, Yellow, Wave length=591nm, SMD 0805, ±70°
9	D3	1	EL17-21SYGC	Everlight	EL17-21SYGC	LED, Green, Wave length=575nm, SMD 0805, ±70°
10	E1, E2	2	FIDUCIAL 1.5mm			Fiducial point for PCB coordinates 1.5mm pad and 3mm hole in mask
11	F1	1	MC36213	Multicomp	MC36213	Resetable PTC fuse, Ih = 0.5A, It = 1.0A, 0805 package
12	J1	1	USB type A plug	SAMTEC	USB-AM-S-F-B-SM1-R	USB type A plug, SMD
13	J2	1	PIN HEADER 2x5	Garry	STL21-0730 G TT-10U	2x5 pin header, 1.27mm pitch, THM
14	J3	1	Horizontal HEADER 1x2	SAMTEC	TSM-102-01-T-SH-P-TR	1x2 horizontal pin header, 2.54 mm pitch, SMD
15	L1	1	0603USB-142ML	Coilcraft	0603USB-142ML	USB common-mode filter in 0603
16	L2	1	4.7uH	TOKO	A914BYW-4R7M	4.7 uH SMT Inductor
17	LABEL1	1	Label PCBA	ACT Logimark AS	505462	PCBA identification label PP Top White Gloss
18	PCB1	1	ZigBit USB Stick PCB	ATMEL		ZigBit USB Stick PCB
19	R1	1	1M00	Samsung	RC1005F1005CS	Thick film resistor, SMD 0402, 1/16W, 1% (de23849)
20	R2, R8	2	0R00	Samsung	RC1005J000CS	Thick film resistor, SMD 0402, 1/16W, 1% (de20048)
21	R3	1	750k			Thick film resistor, SMD 0402, 1/16W, 1%
22	R4	1	240k			Thick film resistor, SMD 0402, 1/16W, 1%
23	R6, R7	2	390R			Thick film resistor, SMD 0402, 1/16W, 1%
24	SW1	1	KMS223GPLFG	C&K Components	KMS223GPLFG	KMS Series Microminiature SMT Side Actuated with pegs
25	TP1, TP2	2	TESTPAD			Single SMD testpad
26	U1	1	LTC3404IMS8	Linear Technology	LTC3404IMS8	2.65-6V Input, 600mA, 1.4 MHz Synchronous Buck Converter
27	Z1	1	ATZB-X-0-256-3-0-C	ATMEL	ATZB-X-0-256-3-0-C	USB Stick Carrier for 2.4GHz. XMega ZigBit
28	R5	0	0R00	Samsung	RC1005J000CS	Thick film resistor, SMD 0402, 1/16W, 1% (de20048)

32

Approved

Notes