

# TLC5958 具有预充电场效应晶体管 (FET)、LED 开路检测功能和显示数据存储器

## 且支持 32 路多路复用的 48 通道 16 位 ES-PWM LED 驱动器

### 1 特性

- 48 通道恒流灌电流输出
- 具有最大亮度控制 (BC)/最大颜色亮度控制 (CC) 数据的灌电流：
  - 5VCC 时为 25mA
  - 3.3VCC 时为 20mA
- 全局亮度控制 (BC)：3 位 (8 步长)
- 每个颜色组的颜色亮度控制 (CC)：9 位 (512 步长)，三组
- 使用多路复用增强型光谱 (ES) PWM 进行灰度 (GS) 控制：16 位
- 支持 32 路多路复用的 48K 位灰度数据存储器
- LED 电源电压高达 10V
- $V_{CC} = 3.0V$  至  $5.5V$
- 恒流精度
  - 通道之间 =  $\pm 1\%$  (典型值)， $\pm 3\%$  (最大值)
  - 器件之间 =  $\pm 1\%$  (典型值)， $\pm 2\%$  (最大值)
- 数据传输速率：25MHz
- 灰度时钟频率：33MHz
- LED 开路检测 (LOD)
- 热关断 (TSD)
- $I_{REF}$  电阻器短路保护 (ISP)
- 可快速恢复的节能模式 (PSM)
- 延迟开关可防止浪涌电流
- 预充电 FET 可避免重影现象

- 工作温度范围：-40°C 至 +85°C

### 2 应用范围

- 采用多路复用系统的 LED 视频显示屏
- 采用多路复用系统的 LED 信号板
- 高刷新率、高密度的 LED 面板

### 3 说明

TLC5958 是一款 48 通道恒流灌电流驱动器，适用于占空比为 1 至 32 的多路复用系统。每个通道都具有单独可调的 65536 步长脉宽调制 (PWM) 灰度 (GS)。

采用 48K 位显示存储器以提升视觉刷新率，同时降低 GS 数据写入频率。

输出通道分为三组，每组含 16 个通道。各组都具有 512 步长颜色亮度控制 (CC) 功能。全部 48 通道的最大电流值可通过 8 步长全局亮度控制 (BC) 功能设置。CC 和 BC 可用于调节 LED 驱动器之间的亮度偏差。可通过一个串行接口端口访问 GS、CC 和 BC 数据。

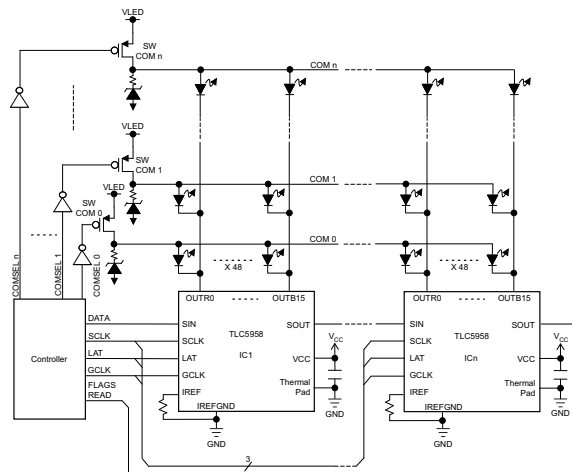
如需应用手册：《使用 TLC5958 构建高密度、高刷新率多路复用 LED 面板》，请通过[电子邮件](#)发送请求。

#### 器件信息(1)

部件号	封装	封装尺寸 (标称值)
TLC5958	VQFN (56)	8.00mm x 8.00mm

(1) 如需了解所有可用封装，请见数据表末尾的可订购产品附录。

### 4 典型应用电路 (多个菊花链 TLC5958)



## 目录

1	特性 .....	1	Diagrams .....	11
2	应用范围 .....	1	9.2 Timing Diagrams .....	13
3	说明 .....	1	<b>10 Detailed Description</b> .....	<b>14</b>
4	典型应用电路（多个菊花链 TLC5958） .....	1	10.1 Overview .....	14
5	修订历史记录 .....	2	10.2 Functional Block Diagram .....	15
6	说明（继续） .....	3	10.3 Device Functional Modes .....	16
7	<b>Pin Configuration and Functions</b> .....	<b>3</b>	<b>11 Application and Implementation</b> .....	<b>20</b>
8	<b>Specifications</b> .....	<b>5</b>	<b>12 Power Supply Recommendations</b> .....	<b>20</b>
8.1	Absolute Maximum Ratings .....	5	<b>13 Layout</b> .....	<b>20</b>
8.2	Handling Ratings .....	5	13.1 Layout Guidelines .....	20
8.3	Recommended Operating Conditions .....	5	13.2 Layout Example .....	20
8.4	Thermal Information .....	6	<b>14 器件和文档支持</b> .....	<b>21</b>
8.5	Electrical Characteristics .....	7	14.1 商标 .....	21
8.6	Typical Characteristics .....	9	14.2 静电放电警告 .....	21
9	<b>Parameter Measurement Information</b> .....	<b>11</b>	14.3 术语表 .....	21
9.1	Pin Equivalent Input and Output Schematic		<b>15 机械封装和可订购信息</b> .....	<b>21</b>

## 5 修订历史记录

### Changes from Original (May 2014) to Revision A

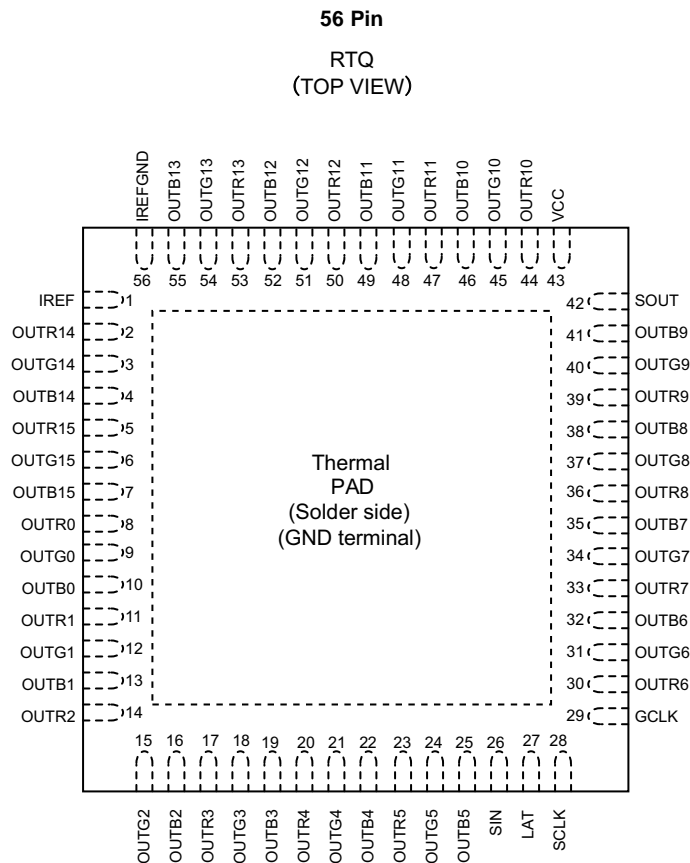
Page

• 已删除 已删除产品预览条 - 设置为生产数据；通改 .....	1
-----------------------------------	---

## 6 说明 (继续)

TLC5958 有一个错误标志: LED 开路检测 (LOD), 可通过串行接口端口读取。TLC5958 还具有节电模式, 可在全部输出关闭后将总功耗设为 0.8mA (典型值)。

## 7 Pin Configuration and Functions



### Pin Functions

PIN		I/O	DESCRIPTION
NAME	NO.		
GCLK	29	I	Grayscale(GS) pulse width modulation (PWM) reference clock control for OUTXn. Each GCLK rising edge increase the GS counter by1 for PWM control.
GND	ThermalPad	–	Power ground. The thermal pad must be soldered to GND on PCB.
IREF	1	–	Maximum constant-current value setting. The OUTR0 to OUTB15 maximum constant output current are set to the desired values by connecting an external resistor between IREF and IREFGND. See equation 1 for more detail. The external resistor should be placed close to the device.
IREFGND	56	–	Analog ground. Dedicated ground pin for the external IREF resistor. This pin should be connected to analog ground trace which is connected to power ground near the common GND point of board.
LAT	27	I	The LAT falling edge latches the data from the common shift register into the GS data memory or Function control(FC) register FC1 or FC2.
OUTR0-R15	8, 11, 14, 17, 20, 23, 30, 33, 36, 39, 44, 47, 50, 53, 2, 5	O	Constant current output for RED LED. Multiple outputs can be tied together to increase the constant current capability. Different voltages can be applied to each output. These outputs are turned on-off by GCLK signal and the data in GS data memory.

**Pin Functions (continued)**

PIN		I/O	DESCRIPTION
NAME	NO.		
OUTG0-G15	9, 12, 15, 18, 21, 24, 31, 34, 37, 40, 45, 48, 51, 54, 3, 6	O	Constant current output for GREEN LED. Multiple outputs can be tied together to increase the constant current capability. Different voltages can be applied to each output. These outputs are turned on-off by GCLK signal and the data in GS data memory.
OUTB0-B15	10, 13, 16, 19, 22, 25, 32, 35, 38, 41, 46, 49, 52, 55, 4, 7	O	Constant current output for BLUE LED. Multiple outputs can be tied together to increase the constant current capability. Different voltages can be applied to each output. These outputs are turned on-off by GCLK signal and the data in GS data memory.
SCLK	28	I	Serial data shift clock. Data present on SIN are shifted to the 48-bit common shift register LSB with the SCLK rising edge. Data in the shift register are shifted towards the MSB at each SCLK rising edge. The common shift register MSB appears on SOUT.
SIN	26	I	Serial data input of the 48-bit common shift register. When SIN is high level, the LSB is set to '1' for only one SCLK input rising edge. If two SCLK rising edges are input while SIN is high, then the 48-bit shift register LSB and LSB+1 are set to '1'. When SIN is low, the LSB is set to '0' at the SCLK input rising edge.
SOUT	42	O	Serial data output of the 48-bit common shift register. SOUT is connected to the MSB of the register.
VCC	43	–	Power-supply voltage.

## 8 Specifications

### 8.1 Absolute Maximum Ratings

over operating free-air temperature range (unless otherwise noted) <sup>(1)</sup>

PARAMETER			MIN	MAX	UNIT
V <sub>CC</sub> <sup>(2)</sup>	Supply voltage	VCC	0.3	6.0	V
I <sub>OUT</sub>	Output current (dc)	OUTx0 to OUTx15, x=R, G, B		30	mA
V <sub>IN</sub> <sup>(2)</sup>	Input voltage	SIN, SCLK, LAT, GCLK, IREF	-0.3	V <sub>CC</sub> +0.3	V
V <sub>OUT</sub> <sup>(2)</sup>	Output voltage	SOUT	-0.3	V <sub>CC</sub> +0.3	V
		OUTx0 to OUTx15, x=R, G, B	-0.3	11	
T <sub>J(MAX)</sub>	Operating junction temperature			150	°C

- (1) Stresses beyond those listed under *Absolute Maximum Ratings* may cause permanent damage to the device. These are stress ratings only, which do not imply functional operation of the device at these or any other conditions beyond those indicated under *Recommended Operating Conditions*. Exposure to absolute-maximum-rated conditions for extended periods may affect device reliability.
- (2) All voltage values are with respect to device ground terminal.

### 8.2 Handling Ratings

			MIN	MAX	UNIT
T <sub>stg</sub>	Storage temperature range		-55	150	°C
V <sub>(ESD)</sub> <sup>(1)</sup>	Electrostatic discharge	Human body model (HBM), per ANSI/ESDA/JEDEC JS-001, all pins <sup>(2)</sup>	0	4000	V
		Charged device model (CDM), per JEDEC specification JESD22-C101, all pins <sup>(3)</sup>	0	1000	

- (1) Electrostatic discharge (ESD) measures device sensitivity and immunity to damage caused by assembly line electrostatic discharges into the device.
- (2) Level listed above is the passing level per ANSI, ESDA, and JEDEC JS-001. JEDEC document JEP155 states that 500-V HBM allows safe manufacturing with a standard ESD control process.
- (3) Level listed above is the passing level per EIA-JEDEC JESD22-C101. JEDEC document JEP157 states that 250-V CDM allows safe manufacturing with a standard ESD control process.

### 8.3 Recommended Operating Conditions

At T<sub>A</sub> = -40°C to +85°C, unless otherwise noted

			MIN	NOM	MAX	UNIT
<b>DC CHARACTERISTICS, VCC=3V to 5.5V</b>						
V <sub>CC</sub>	Supply voltage		3		5.5	V
V <sub>O</sub>	Voltage applied to output	OUTx0 to OUTx15, x=R, G, B			10	V
V <sub>IH</sub>	High level input voltage	SIN,SCLK,LAT,GCLK	0.7×VCC		VCC	V
V <sub>IL</sub>	Low level input voltage	SIN,SCLK,LAT,GCLK	GND		0.3×VCC	V
I <sub>OH</sub>	High level output current	SOUT			-2	mA
I <sub>OL</sub>	Low level output current	SOUT			2	mA
I <sub>OLC</sub>	Constant output sink current	OUTx0 to OUTx15, x=R, G, B, 3V ≤ VCC ≤ 3.6V			20	mA
		OUTx0 to OUTx15, x=R, G, B, 4V < VCC ≤ 5.5V			25	
T <sub>A</sub>	Operating free air temperature		-40		85	°C
T <sub>J</sub>	Operation junction temperature		-40		125	°C

**Recommended Operating Conditions (continued)**

 At  $T_A = -40^{\circ}\text{C}$  to  $+85^{\circ}\text{C}$ , unless otherwise noted

			MIN	NOM	MAX	UNIT
<b>AC CHARACTERISTICS, VCC=3V to 5.5V<sup>(1)</sup></b>						
$F_{\text{CLK(SCLK)}}$	Data shift clock frequency	SCLK			25	MHz
$F_{\text{CLK(GCLK)}}$	Grayscale control clock frequency	GCLK			33	MHz
$t_{\text{WH0}}$	Pulse duration	SCLK	10			ns
$t_{\text{WL0}}$		SCLK	10			
$t_{\text{WH1}}$		GCLK	15			
$t_{\text{WL1}}$		GCLK	10			
$t_{\text{SU0}}$	Setup time	SIN - SCLK $\uparrow$	2			ns
$t_{\text{SU1}}$		LAT $\uparrow$ - SCLK $\uparrow$	3			
$t_{\text{SU2}}$		LAT $\downarrow$ - SCLK $\uparrow$	5			
		LAT $\downarrow$ - SCLK $\uparrow$ , for READSID, READFC1, and READFC2	50			
$t_{\text{SU3}}$		LAT $\downarrow$ (Vsync command) - GCLK $\uparrow$	2500			
$t_{\text{SU4}}$		The last LAT $\downarrow$ for no all '0' data latching to resume normal mode – GCLK $\uparrow$ , PSAVE_ENA bit = '1b'	50			$\mu\text{S}$
$t_{\text{SU5}}$	The last GCLK $\uparrow$ - the 1st GCLK $\uparrow$ of next line	20			ns	
$t_{\text{H0}}$	Hold time	SCLK $\uparrow$ - SIN	2			ns
$t_{\text{H1}}$		SCLK $\uparrow$ - LAT $\uparrow$	2			
$t_{\text{H2}}$		SCLK $\uparrow$ - LAT $\downarrow$	13			

(1) Specified by design

**8.4 Thermal Information**

THERMAL METRIC <sup>(1)</sup>		TLC5958	UNIT
		RTQ	
		56 PINS	
$R_{\theta\text{JA}}$	Junction-to-ambient thermal resistance	27.4	$^{\circ}\text{C}/\text{W}$
$R_{\theta\text{JC(top)}}$	Junction-to-case (top) thermal resistance	13.6	
$R_{\theta\text{JB}}$	Junction-to-board thermal resistance	5.5	
$\Psi_{\text{JT}}$	Junction-to-top characterization parameter	0.2	
$\Psi_{\text{JB}}$	Junction-to-board characterization parameter	5.5	
$R_{\theta\text{JC(bot)}}$	Junction-to-case (bottom) thermal resistance	0.8	

 (1) For more information about traditional and new thermal metrics, see the *IC Package Thermal Metrics* application report, [SPRA953](http://www.ti.com/lit/zip/spra953).

## 8.5 Electrical Characteristics

At  $V_{CC} = 3.0V$  to  $5.5V$  and  $T_A = -40^{\circ}C$  to  $85^{\circ}C$ ,  $V_{LED} = 5.0V$ , Typical values are at  $V_{CC} = 3.3V$ ,  $T_A = 25^{\circ}C$  (unless otherwise noted).

PARAMETER			TEST CONDITIONS	MIN	TYP	MAX	UNIT
$V_{OH}$	Output voltage	High	$I_{OH} = -2mA$ at SOUT	$V_{CC}-0.4$		$V_{CC}$	V
$V_{OL}$		Low	$I_{OL} = 2 mA$ at SOUT			0.4	V
$V_{LOD0}$	LED open detection threshold		LODVTH = 00b	0.06	0.11	0.16	V
$V_{LOD1}$			LODVTH = 01b	0.2	0.25	0.3	
$V_{LOD2}$			LODVTH = 10b	0.34	0.39	0.44	
$V_{LOD3}$			LODVTH = 11b	0.44	0.49	0.54	
$V_{REF}$	Reference voltage output		$R_{REF} = 6.2 k\Omega$ (1mA target), BC=0h, CCR/G/B=81h	1.19	1.209	1.228	V
$I_{IN}$	Input current (SIN, SCLK)		$V_{IN} = V_{CC}$ or GND	-1		1	$\mu A$
$I_{CC0}$	Supply current ( $V_{CC}$ )		SIN/SCLK/LAT/GSCLK=GND, GS <sub>n</sub> =0000h, BC=0h, CCR/G/B=81h, VOUT <sub>n</sub> = $V_{CC}$ , RIREF=OPEN		5.5	7	mA
$I_{CC1}$			SIN/SCLK/LAT/GSCLK=GND, GS <sub>n</sub> =0000h, BC=4h, CCR/G/B=137h, VOUT <sub>n</sub> = $V_{CC}$ , RIREF=7.5k $\Omega$ ( $I_o=10mA$ target)		7	9	
$I_{CC2}$			SIN/SCLK/LAT=GND, GCLK=33MHz, T <sub>SU5</sub> = 200nS, 8+8 mode, GS <sub>n</sub> =FFFFh, BC=4h, CCR/G/B=137h, VOUT <sub>n</sub> = $V_{CC}-1V$ when channel on, VOUT <sub>n</sub> = $V_{CC}$ when channel off. RIREF=7.5k $\Omega$ ( $I_o=10mA$ target)		25	31	
$I_{CC3}$			SIN/SCLK/LAT=GND, GCLK=33MHz, TSU5=200nS, 8+8 mode, GS <sub>n</sub> =FFFFh, BC=7h, CCR/G/B=1F5h, VOUT <sub>n</sub> = $V_{CC}-2.5V$ when channel on, VOUT <sub>n</sub> = $V_{CC}$ when channel off. RIREF=7.5k $\Omega$ ( $I_o=25mA$ target)		28	33	
$I_{CC4}$			In power save mode		0.9	1.5	
$\Delta I_{OLC0}$	Constant current error (OUT <sub>x0-15</sub> , x=R/G/B)	Channel-to-channel <sup>(1)</sup>	All OUT <sub>n</sub> =on, BC=0h, CCR/G/B=81h, VOUT <sub>n</sub> =VOUT <sub>fix</sub> =1V, RIREF=6.2k $\Omega$ (1mA target), $T_A = +25^{\circ}C$ , at same color grouped output of OUT <sub>R0-15</sub> , OUT <sub>G0-15</sub> and OUT <sub>B0-15</sub>		$\pm 1\%$	$\pm 3\%$	
$\Delta I_{OLC1}$	Constant current error (OUT <sub>x0-15</sub> , x=R/G/B)	Device-to-device <sup>(2)</sup>	All OUT <sub>n</sub> =on, BC=0h, CCR/G/B=81h, VOUT <sub>n</sub> =VOUT <sub>fix</sub> =1V, RIREF=6.2k $\Omega$ (1mA target), $T_A = +25^{\circ}C$ , at same color grouped output of OUT <sub>R0-15</sub> , OUT <sub>G0-15</sub> and OUT <sub>B0-15</sub>		$\pm 1\%$	$\pm 2\%$	
$\Delta I_{OLC2}$	Line regulation <sup>(3)</sup>		$V_{CC}=3.0$ to $5.5V$ , All OUT <sub>n</sub> =on, BC=0h, CCR/G/B=81h, VOUT <sub>n</sub> =VOUT <sub>fix</sub> =1V, RIREF=6.2k $\Omega$ (1mA target)		$\pm 1$	$\pm 1.5$	%/V
$\Delta I_{OLC3}$	Load regulation <sup>(4)</sup>		All OUT <sub>n</sub> =on, BC=0h, CCR/G/B=81h, VOUT <sub>n</sub> =1 to 3V, VOUT <sub>fix</sub> =1V, RIREF=6.2k $\Omega$ (1mA target)		$\pm 1$	$\pm 1.5$	%/V

- (1) The deviation of each outputs in same color group (OUT<sub>R0~15</sub> or OUT<sub>G0~15</sub> or OUT<sub>B0~15</sub>) from the average of same color group constant current. The deviation is calculated by the formula. (X=R or G or B, n=0~15)

$$\Delta(\%) = \left[ \frac{I_{OUTXn}}{(I_{OUTX0} + I_{OUTX1} + \dots + I_{OUTX14} + I_{OUTX15})} - 1 \right] \times 100$$

- (2) The deviation of the average of constant-current in each color group from the ideal constant-current value. (X = R or G or B) :

$$\Delta(\%) = \left[ \frac{(I_{OUTX0} + I_{OUTX1} + \dots + I_{OUTX15})}{16} - (\text{Ideal Output Current}) \right] \times 100$$

Ideal current is calculated by the following equation:

$$\text{Ideal Output (mA)} = \text{Gain} \times \left[ \frac{V_{REF}}{R_{REF}(\Omega)} \right] \times \text{CCR (or CCG, CCB)} / 511d, V_{REF} = 1.209V \text{ (Typ).}$$

Refer to Table 1 for the Gain at chosen BC.

- (3) Line regulation is calculated by the following equation. (X=R or G or B, n=0~15):

$$\Delta(\%V) = \left[ \frac{(I_{OUTXn} \text{ at } V_{CC} = 5.5V) - (I_{OUTXn} \text{ at } V_{CC} = 3.0V)}{(I_{OUTXn} \text{ at } V_{CC} = 3.0V)} \right] \times \frac{100}{5.5V - 3V}$$

- (4) Load regulation is calculated by the following equation. (X=R or G or B, n=0~15):

$$\Delta(\%V) = \left[ \frac{(I_{OUTXn} \text{ at } V_{OUTXn} = 3V) - (I_{OUTXn} \text{ at } V_{OUTXn} = 1V)}{(I_{OUTXn} \text{ at } V_{OUTXn} = 1V)} \right] \times \frac{100}{3V - 1V}$$

**Electrical Characteristics (continued)**

At  $V_{CC}=3.0V$  to  $5.5V$  and  $T_A=-40^{\circ}C$  to  $85^{\circ}C$ ,  $V_{LED}=5.0V$ , Typical values are at  $V_{CC}=3.3V$ ,  $T_A=25^{\circ}C$  (unless otherwise noted).

PARAMETER			TEST CONDITIONS	MIN	TYP	MAX	UNIT
$\Delta I_{OLC4}$	Constant current error (OUTx0-15, x=R/G/B)	Channel-to-channel <sup>(1)</sup>	All OUTn=on, BC=7h, CCR/G/B=1F7h, VOUTn=VOUTfix=1V, RIREF=7.5k $\Omega$ (25mA target), $T_A=+25^{\circ}C$ , at same color grouped output of OUTRO-15, OUTG0-15 & OUTB0-15		$\pm 1\%$	$\pm 3\%$	
$\Delta I_{OLC5}$	Constant current error (OUTx0-15, x=R/G/B)	Device-to-device <sup>(2)</sup>	All OUTn=on, BC=7h, CCR/G/B=1F7h, VOUTn=VOUTfix=1V, RIREF=7.5k $\Omega$ (25mA target), $T_A=+25^{\circ}C$ , at same color grouped output of OUTRO-15, OUTG0-15 and OUTB0-15		$\pm 1\%$	$\pm 2\%$	
$\Delta I_{OLC6}$	Line regulation <sup>(3)</sup>		$V_{CC}=3.0$ to $5.5V$ , All OUTn=on, BC=7h, CCR/G/B=1F7h, VOUTn=VOUTfix=1V, RIREF=7.5Kohm (25mA target)		$\pm 1$	$\pm 1.5$	%/V
$\Delta I_{OLC7}$	Load regulation <sup>(4)</sup>		All OUTn=on, BC=7h, CCR/G/B=1F7h, VOUTn=1 to 3V, VOUTfix=1V, RIREF=7.5k $\Omega$ (25mA target)		$\pm 1$	$\pm 1.5$	%/V
$T_{TSD}$	Thermal shutdown threshold <sup>(5)</sup>			160	170	180	$^{\circ}C$
$T_{HYS}$	Thermal shutdown hysteresis				10		$^{\circ}C$
$V_{ISP(in)}$	IREF resistor short protection threshold			0.135	0.19		V
$V_{ISP(out)}$	IREF resistor short-protection release threshold				0.325	0.375	V
$R_{PDWN}$	Pull-down resistor		LAT	250	500	750	k $\Omega$
$R_{PUP}$	Pull-up resistor		GCLK	250	500	750	k $\Omega$
$V_{knee}^{(5)}$	Knee voltage (OUTX 0~15), X=R/G/B		All OUTn=on, BC=4h, CCR/G/B=137h, Riref=7.5k $\Omega$ . (Io=10mA target)		0.32	0.35	V

(5) Specified by design.



### 8.6 Typical Characteristics

$V_{CC} = 3.3V$  and  $T_A = 25^\circ C$ , unless otherwise noted.

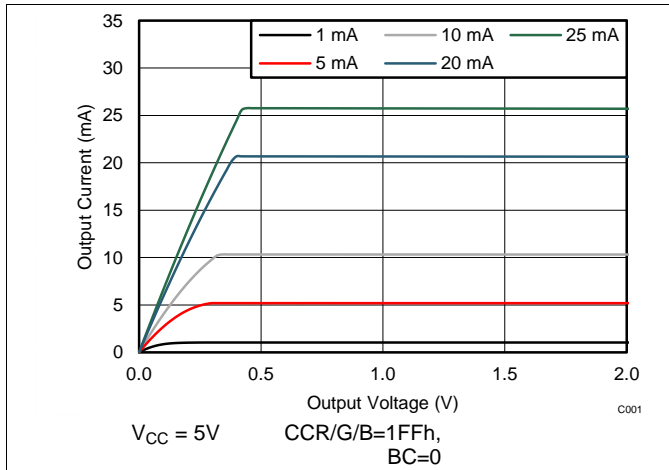


Figure 1. Output Current vs Output Voltage

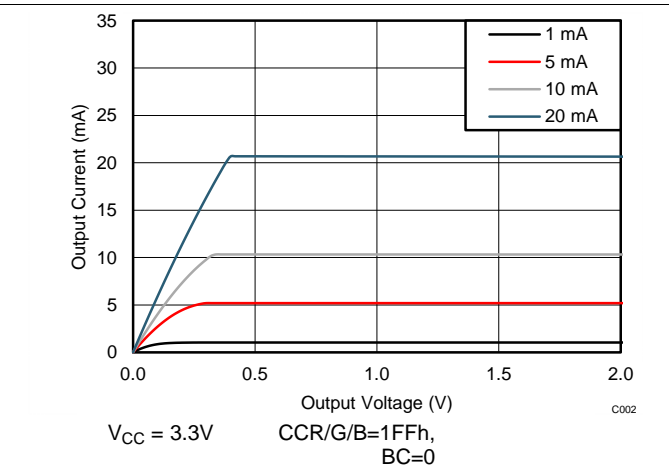


Figure 2. Output Current vs Output Voltage

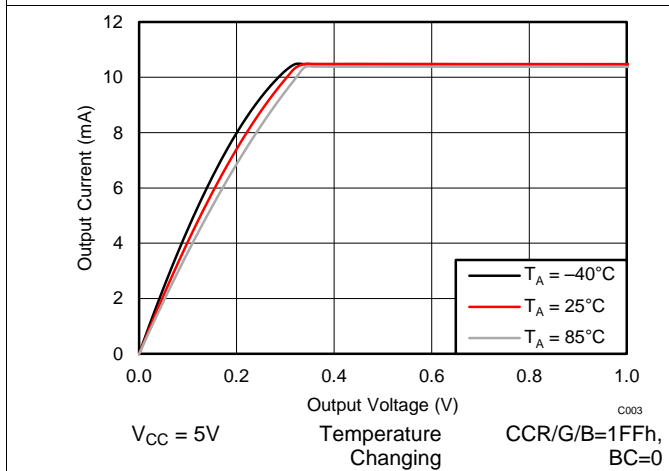


Figure 3. Output Current vs Output Voltage

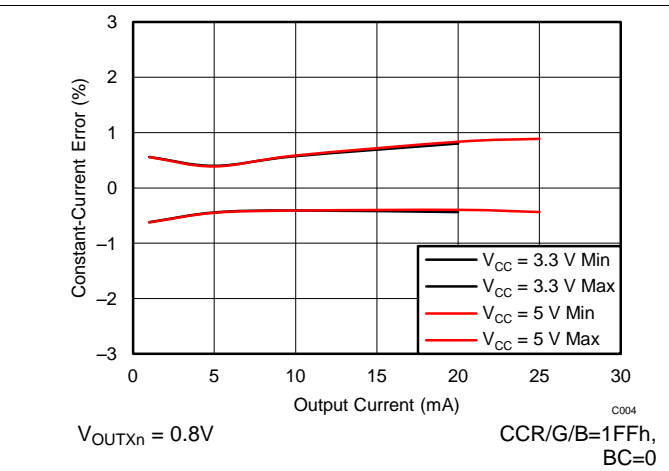


Figure 4. Constant Current Error (CH-to-CH) vs Output Current

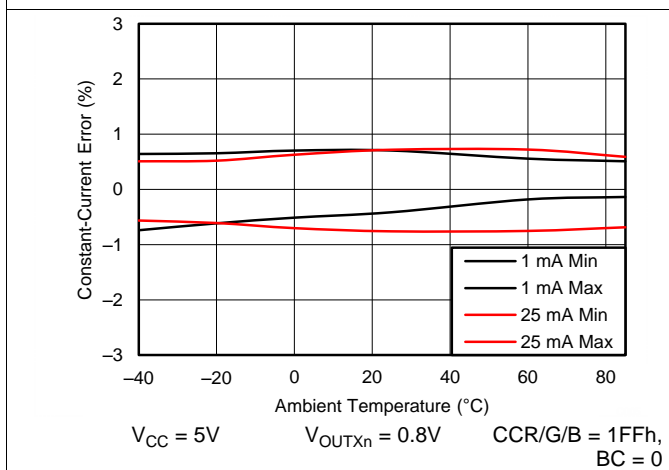


Figure 5. Constant-Current Error (CH-to-CH) vs Temperature

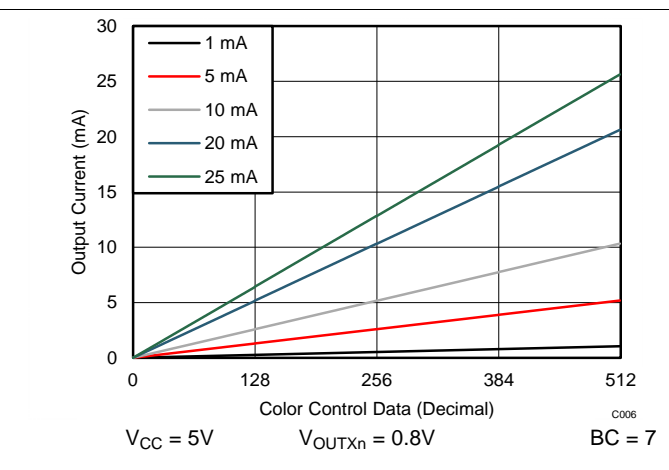


Figure 6. Color Control (CC) vs Output Current

### Typical Characteristics (continued)

$V_{CC} = 3.3V$  and  $T_A = 25^\circ C$ , unless otherwise noted.

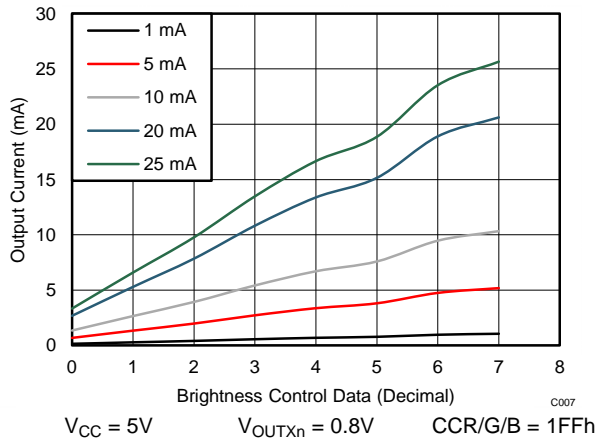


Figure 7. Brightness Control (BC) vs Output Current

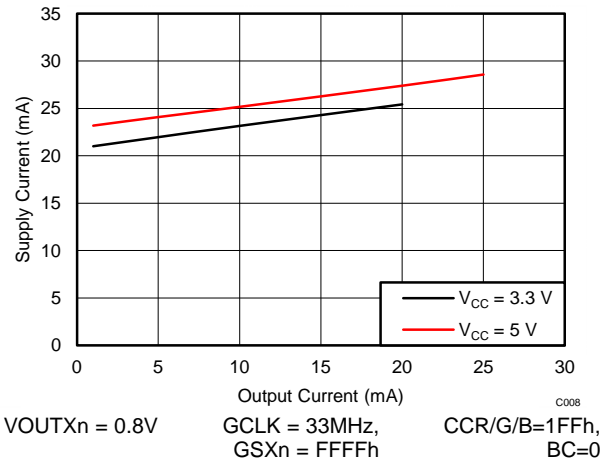


Figure 8. Supply Current ( $I_{cc}$ ) vs Output Current

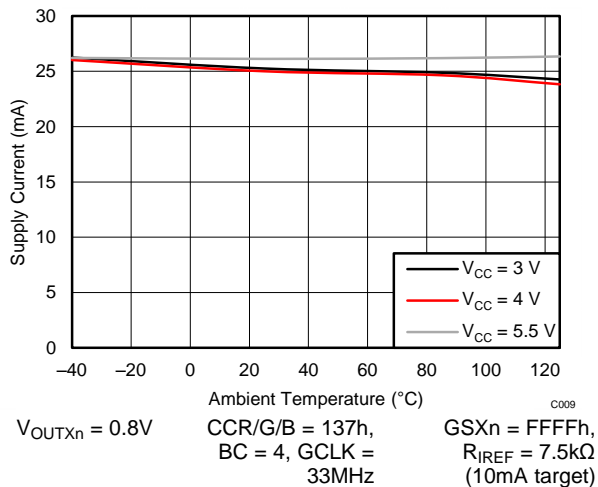


Figure 9. Supply Current ( $I_{cc}$ ) vs Temperature

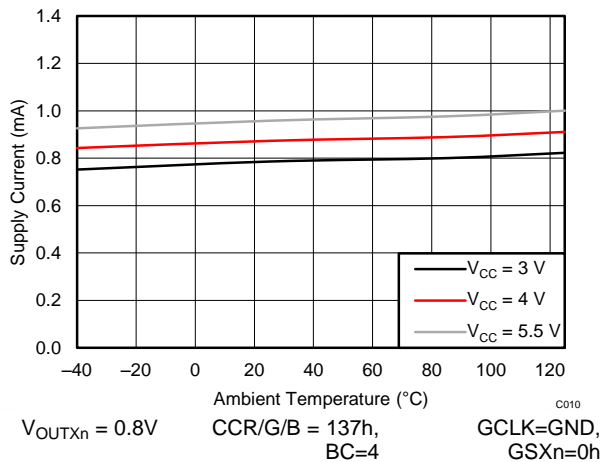


Figure 10. Supply Current in Power Save Mode ( $I_{cc}$ ) vs Temperature

## 9 Parameter Measurement Information

### 9.1 Pin Equivalent Input and Output Schematic Diagrams

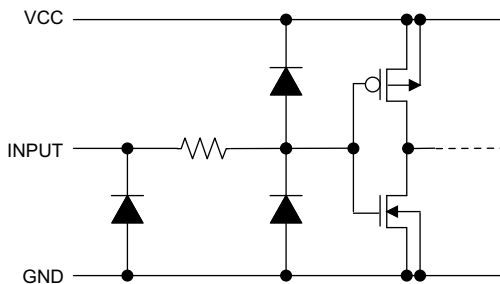


Figure 11. SIN, SCLK

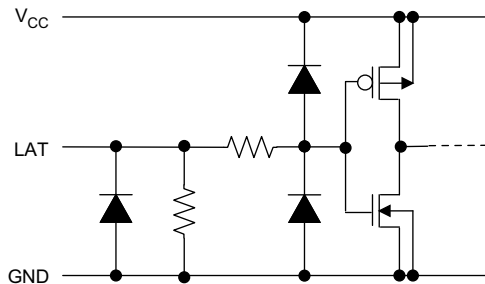


Figure 12. LAT

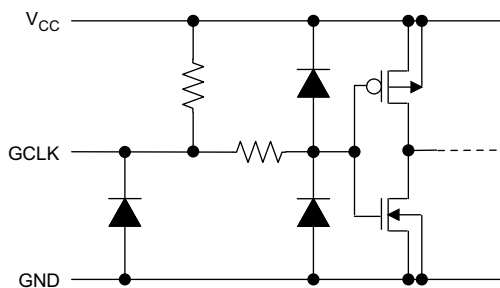


Figure 13. GCLK

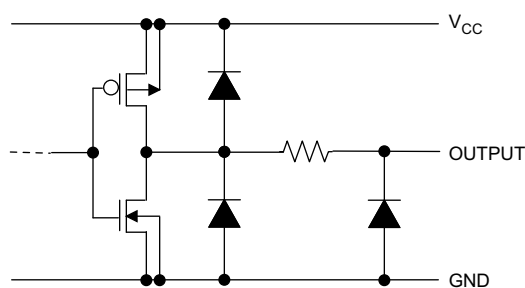


Figure 14. SOUT

(1) X=R or G or B, n=0-15

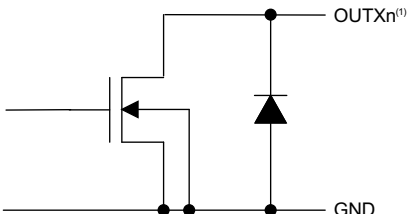


Figure 15. OUTR0/G0/B0 Through OUTR15/G15/B15

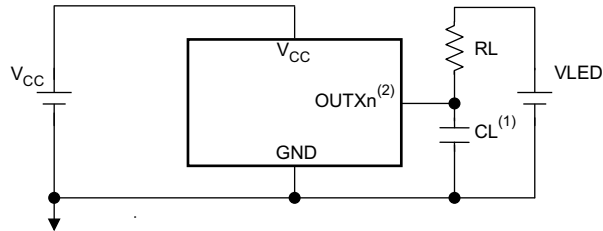
## Pin Equivalent Input and Output Schematic Diagrams (continued)

### 9.1.1 Test Circuits

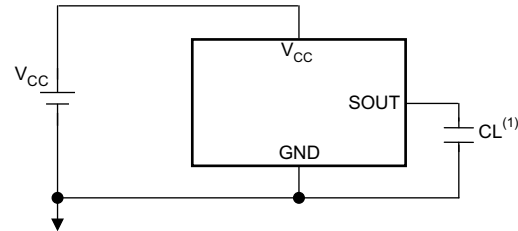
(1) CL includes measurement probe and jig capacitance.

(2) X=R or G or B, n=0~15

(1) CL includes measurement probe and jig capacitance.

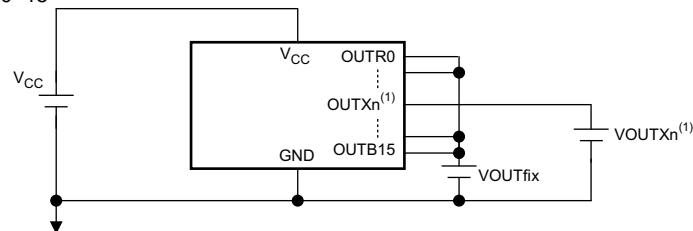


**Figure 16. Rise Time and Fall Time Test Circuit for OUTXn**



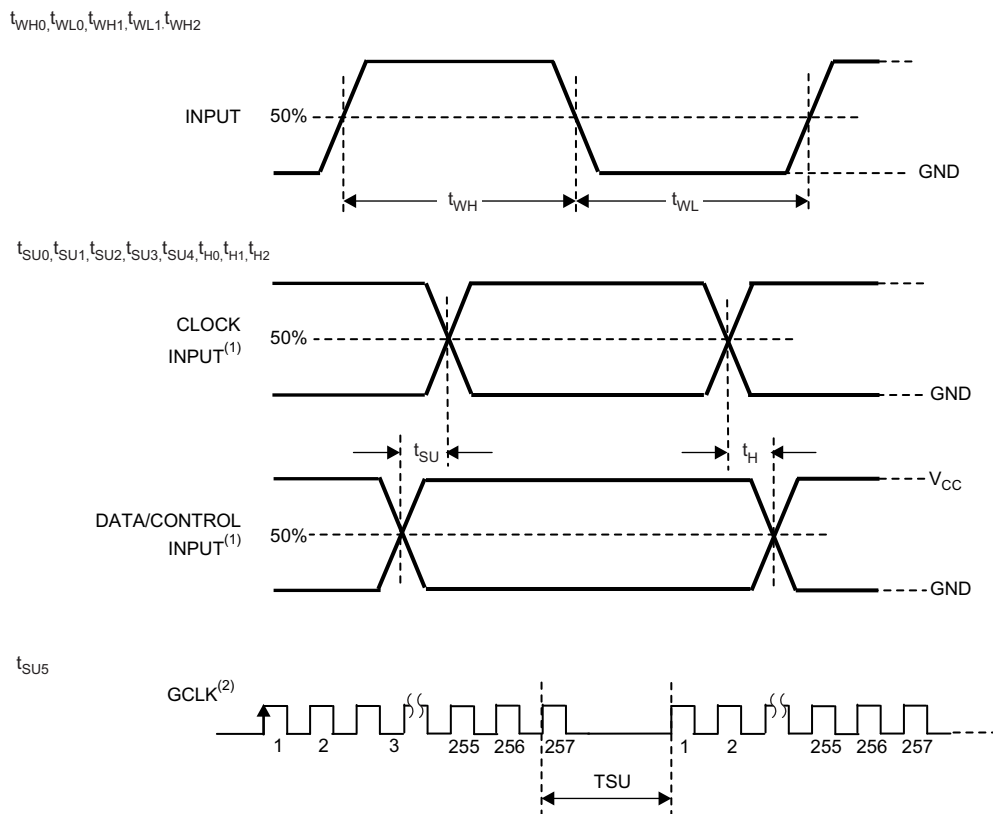
**Figure 17. Rise Time and Fall Time Test Circuit for SOUT**

(1) X=R or G or B, n=0~15



**Figure 18. Constant Current Test Circuit for OUTXn**

## 9.2 Timing Diagrams



(1) Input pulse rise and fall time is 1~3ns

(2) 8 + 8 mode (SEL\_PWM=0)

Figure 19. Timing Diagrams

## 10 Detailed Description

### 10.1 Overview

The TLC5958 is a 48 channels constant-current sink driver for multiplexing system with 1 to 32 duty ratio. Each channel has an individually-adjustable, 65536-step, pulse width modulation (PWM) grayscale (GS).

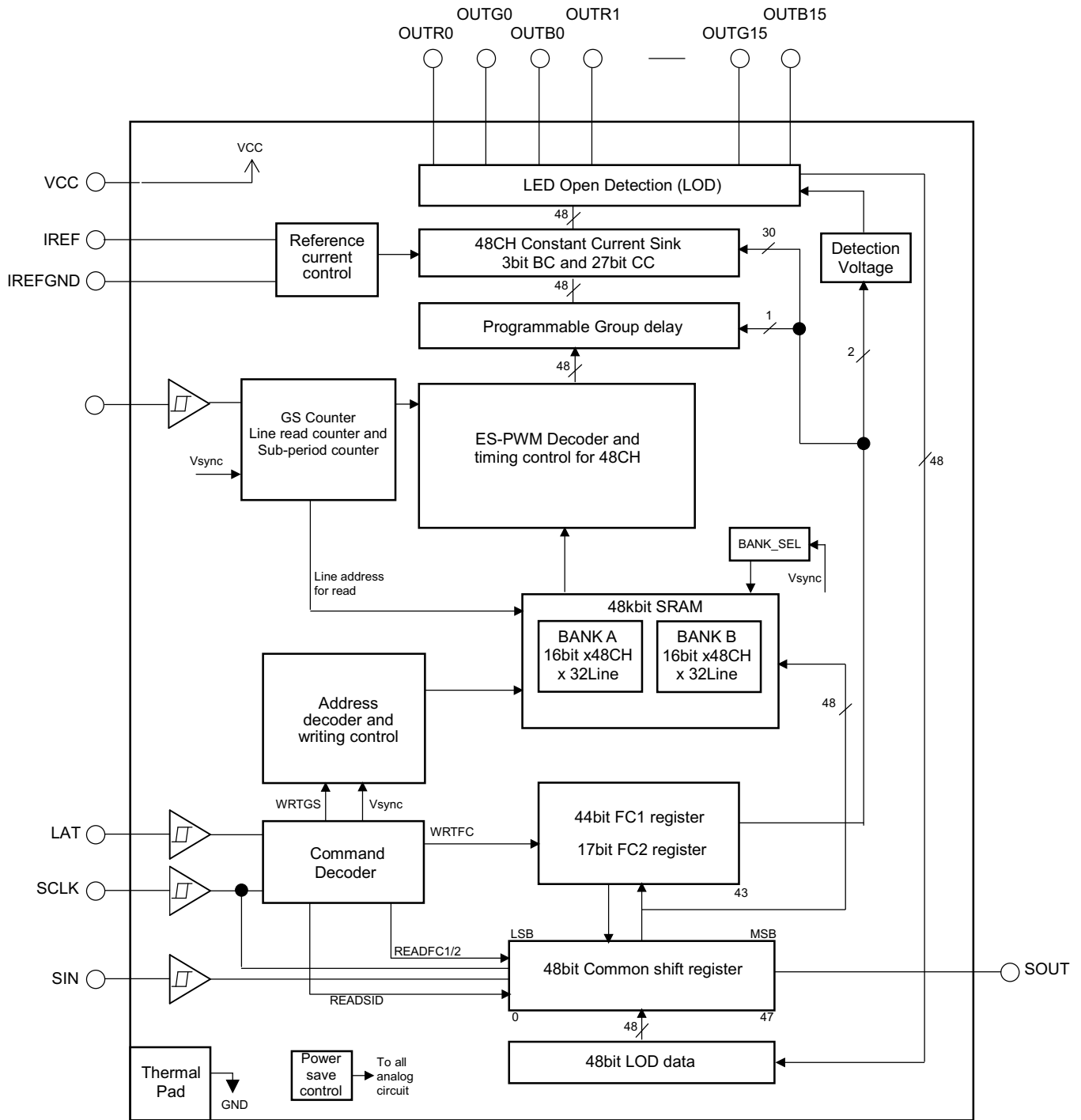
48K bit display memory is implemented to increase the visual refresh rate and to decrease the GS data writing frequency.

The TLC5958 support output current range from 1mA to 25mA, channel-to-channel accuracy is 3% max, device-to-device accuracy is 2% max in all current range. Besides, it implement Low Gray Scale Enhancement (LGSE™) technology to improve the display quality at low grayscale condition. These features make TLC5958 more suitable for high-density multiplexing application.

The output channels are grouped into three groups, each group has 16 channels. Each group has a 512-step color brightness control (CC) function. The maximum current value of all 48 channels can be set by 8-step global brightness control (BC) function. CC and BC can be used to adjust the brightness deviation between LED drivers. GS, CC, and BC data are accessible via a serial interface port.

The TLC5958 has one error flag: LED open detection (LOD), which can be read via a serial interface port. Besides, The TLC5958 also have Thermal shut down(TSD) and Iref resistor short protection(ISP), which make sure a higher system reliability. The TLC5958 also has a power-save mode that sets the total current consumption to 0.8mA (typ) when all outputs are off.

### 10.2 Functional Block Diagram



### 10.3 Device Functional Modes

After power on, all OUTXn of the TLC5958 are turned off. All the internal counters and function control registers (FC1/FC2) are initialized. The following list is a brief summary of the sequence to operate the TLC5958, to give users a general idea how the device works. After that, the function block related to each step is detailed in the following sections.

1. According to required LED current, choose BC & CC code, select the current programming resistor R<sub>IREF</sub>.
2. Send WRTFC command to set FC1/2 register value if the default value need be changed.
3. Write GS data of all lines (max 32 lines) into one of the two memory BANKs.
4. Send Vsync command, the BANK with the GS data written just now will be displayed.
5. Input GCLK continuously, 257GCLK (or 513GCLK) as a segment. Between the interval of two segments, supply voltage should be switched from one line to next line accordingly.
6. During the same period of step 5, GS data for next frame should be written into another BANK.
7. When the time of one frame ends, Vsync command should be input to swap the purpose of the two BANKs.

Repeat step 5 through 7.

#### 10.3.1 Brightness Control (BC) Function

The TLC5958 is able to adjust the output current of all constant-current outputs simultaneously. This function is called global brightness control (BC). The global BC for all outputs is programmed with a 3-bit word, thus all output currents can be adjusted in 8 steps from 12.9% to 100% for a given current-programming resistor, R<sub>IREF</sub> (See Table 2).

BC data can be set via the serial interface. When the BC data changes, the output current also changes immediately. When the device is powered on, the BC data in the function control (FC) register FC1 is set to 4h as the initial value.

#### 10.3.2 Color Brightness Control (CC) Function

The TLC5958 is able to adjust the output current of each of the three color groups OUTR0-OUTR15, OUTG0-OUTG15, and OUTB0-OUTB15 separately. This function is called color brightness control (CC). For each color, it has 9-bit data latch CCR, CCG, or CCB in FC1 register. Thus, all color group output currents can be adjusted in 512 steps from 0% to 100% of the maximum output current, I<sub>OLCMax</sub>. (See the next section for more detail about I<sub>OLCMax</sub>). The CC data are entered via the serial interface. When the CC data change, the output current also changes immediately.

When the IC is powered on, the CC data are set to '100h'. Equation 1 calculates the actual output current.

$$I_{out}(mA) = I_{OLCMax}(mA) \times (CCR/511d \text{ or } CCG/511d \text{ or } CCB/511d) \quad (1)$$

Where:

I<sub>OLCMax</sub> = the maximum channel current for each channel, determined by BC data and R<sub>IREF</sub> (See [Equation 2](#))

CCR/G/B = the color brightness control value for each color group in the FC1 register (000h to 1FFh)

[Table 1](#) shows the CC data versus the constant-current against I<sub>OLCMax</sub>.



**Device Functional Modes (continued)**
**Table 1. CC Data vs Current Ratio and Set Current Value**

CC DATA (CCR or CCG or CCB)			RATIO OF OUTPUT CURRENT TO $I_{OLCMax}$ (%, typical)	OUTPUT CURRENT (mA, $R_{IREF} = 7.41 \text{ k}\Omega$ )	
BINARY	DECIMAL	HEX		BC = 7h ( $I_{OLCMax} = 25\text{mA}$ )	BC = 0h ( $I_{OLCMax} = 3.2\text{mA}$ )
0 0000 0000	0	00	0	0	0
0 0000 0001	1	01	0.2	0.05	0.006
0 0000 0010	2	02	0.4	0.10	0.013
---	---	---	---	---	---
1 0000 0000 (Default)	256 (Default)	100 (Default)	50.1	12.52	1.621
---	---	---	---	---	---
1 1111 1101	509	1FD	99.6	24.90	3.222
1 1111 1110	510	1FE	99.8	24.95	3.229
1 1111 1111	511	1FF	100.0	25	3.235

**10.3.3 Select  $R_{IREF}$  For a Given BC**

The maximum output current per channel,  $I_{OLCMax}$ , is determined by resistor  $R_{IREF}$ , placed between the IREF and IREFGND pins, and the BC code in FC1 register. The voltage on IREF is typically 1.209V.  $R_{IREF}$  can be calculated by [Equation 2](#).

$$R_{IREF}(\text{k}\Omega) = V_{IREF}(\text{V}) / I_{OLCMax}(\text{mA}) \times \text{Gain} \quad (2)$$

Where:

$V_{IREF}$  = the internal reference voltage on IREF (1.209V, typical)

$I_{OLCMax}$  is the largest current for each output at CCR/G/B=1FFh.

Gain = the current gain at a selected BC code (See [Table 2](#) )

**Table 2. Current Gain Versus BC Code**

BC DATA		GAIN	RATIO OF GAIN / GAIN_MAX (AT MAX BC)
BINARY	HEX		
000 (recommend)	0 (recommend)	20.4	12.9%
001	1	40.3	25.6%
010	2	59.7	52.4%
011	3	82.4	12.9%
100 (default)	4 (default)	101.8	64.7%
101	5	115.4	73.3%
110	6	144.3	91.7%
111	7	157.4	100%

NOTE: Recommend using a smaller BC code for better performance. For noise immunity purposes, suggest  $R_{IREF} < 60 \text{ k}\Omega$

**10.3.4 Choosing BC/CC For a Different Application**

BC is mainly used for global brightness adjustment between day and night. Suggested BC is 4h, which is in the middle of the range, thus, one can change brightness up and down flexibly.

CC can be used to fine tune the brightness in 512 steps, this is suitable for white balance adjustment between RGB color group. To get a pure white color, the general requirement for the luminous intensity ratio of R, G, B LED is 3:6:1. Depending on the characteristics of the LED (Electro-Optical conversion efficiency), the current ratio of R, G, B LED will be much different from this ratio. Usually, the Red LED needs the largest current. One can choose 511d (the max value) CC code for the color group that needs the largest initial current, then choose proper CC code for the other two color groups according to the current ratio requirement of the LED used.

#### 10.3.4.1 Example 1: Red LED Current is 20mA, Green LED Needs 12mA, Blue LED needs 8mA

1. Red LED needs the largest current, so choose 511d for CCR
2.  $511 \times 12\text{mA} / 20\text{mA} = 306.6$ , thus choose 307d for CCG. With same method, choose 204d for CCB.
3. According to the required red LED current, choose 7h for BC.
4. According to Equation 2,  $R_{\text{REF}} = 1.209\text{V} / 20\text{mA} \times 157.4 = 9.5 \text{ k}\Omega$

In this example, we choose 7h for BC, instead of using the default 4h. This is because the Red LED current is 20mA, approaching the upper limit of current range. To prevent the constant output current from exceeding the upper limit in case a larger BC code is input accidentally, we choose the maximum BC code here.

#### 10.3.4.2 Example 2: Red LED Current is 5mA, Green LED Needs 2mA, Blue LED Needs 1mA.

1. Red LED needs the largest current, so choose 511d for CCR.
2.  $511 \times 2\text{mA} / 5\text{mA} = 204.4$ , thus choose 204d for CCG. With same method, choose 102d for CCB.
3. According to the required blue LED current, choose 0h for BC.
4. According to Equation 2,  $R_{\text{REF}} = 1.209\text{V} / 5\text{mA} \times 20.4 = 4.93 \text{ k}\Omega$

In this example, we choose 0h for BC, instead of using the default 4h. This is because the Blue LED current is 1mA, is approaching the lower limit of current range. To prevent the constant output current from exceeding the lower limit in case a lower BC code is input accidentally, we choose the minimum BC code here. In general, if LED current is in the middle of the range (i.e, 10mA), one can just use the default 4h as BC code.

### 10.3.5 LED Open Detection (LOD)

The LOD function detects faults caused by an open circuit in any LED string; or, a short from OUTXn to ground with low impedance. It does this by comparing the OUTXn voltage to the LOD detection threshold voltage level set by LODVLT in the FC1 register. If the OUTXn voltage is lower than the programmed voltage, the corresponding output LOD bit will be set to '1' to indicate a open LED. Otherwise, the output of that LOD bit is '0'. LOD data output by the detection circuit are valid only during the 'on' period of that OUTXn output channel. The LOD data are always '0' for outputs that are turned off.

### 10.3.6 Power Save Mode (PSM)

The power-save mode (PSM) is enabled by setting PSAVE\_ENA (bit5 of FC2 register) to '1'. When power on, this bit default is '0'.

When this function is enabled, if the GS data received for next frame is all '0', IC will enter power save mode at the moment Vsync command input.

When the IC is in power-save mode, it resumes normal mode when it detects non-zero GS data input. In power-save mode all analog circuits such as constant current output and the LOD circuit are not operational; the device total current consumption, I<sub>cc</sub>, is below 1mA.

### 10.3.7 Internal Pre-Charge FET

The internal pre-charge FET can prevent ghosting of multiplexed LED modules. One cause of this phenomenon is the charging current for parasitic capacitance of the OUTXn through the LED when the supply voltage switches from one common line to the next common line.

To prevent this unwanted charging current, TLC5958 uses an internal FET to pull OUTXn up to VCC –1.4V during the common line switching period. Thus, no charging current flows through LED and ghosting is eliminated.

### 10.3.8 Thermal Shutdown (TSD)

The thermal shutdown (TSD) function turns off all IC constant-current outputs when the junction temperature (T<sub>j</sub>) exceeds 170°C (typ). It resumes normal operation when T<sub>j</sub> falls below 160°C (typ).

### **10.3.9 IREF Resistor Short Protection (ISP)**

The Iref resistor short protection (ISP) function prevents unwanted large currents from flowing through the constant-current output when the Iref resistor is shorted accidentally. The TLC5958 turns off all output channels when the Iref pin voltage is lower than 0.19V (typ). When the Iref pin voltage goes higher than 0.325V (typ), the TLC5958 resumes normal operation.

#### **10.3.10 Noise Reduction**

Large surge currents may flow through the IC and the board on which the device is mounted if all 48 LED channels turned on simultaneously at the 1st GCLK rising edge. This large surge current could induce detrimental noise and electromagnetic interference (EMI) into other circuits.

The TLC5958 separates the LED channels into 12 groups. Each group turns on sequentially with some delay between one group and the next group. By this operation, a soft-start feature provides for minimal inrush current.

## 11 Application and Implementation

Send request via [email](#) for Application Note: *Build High Density, High Refresh Rate, Multiplexing LED Panel with TLC5958*

## 12 Power Supply Recommendations

The  $V_{CC}$  power supply voltage should be decoupled by placing a 0.1  $\mu\text{F}$  ceramic capacitor close to VCC pin and GND plane. Depending on panel size, several electrolytic capacitors must be placed on board equally distributed to get a well regulated LED supply voltage (VLED). VLED voltage ripple should be less than 5% of its nominal value. Furthermore, the VLED should be set to the voltage calculated by equation:

$$V_{LED} > V_f + 0.4V \quad (10\text{mA constant current example}) \quad (3)$$

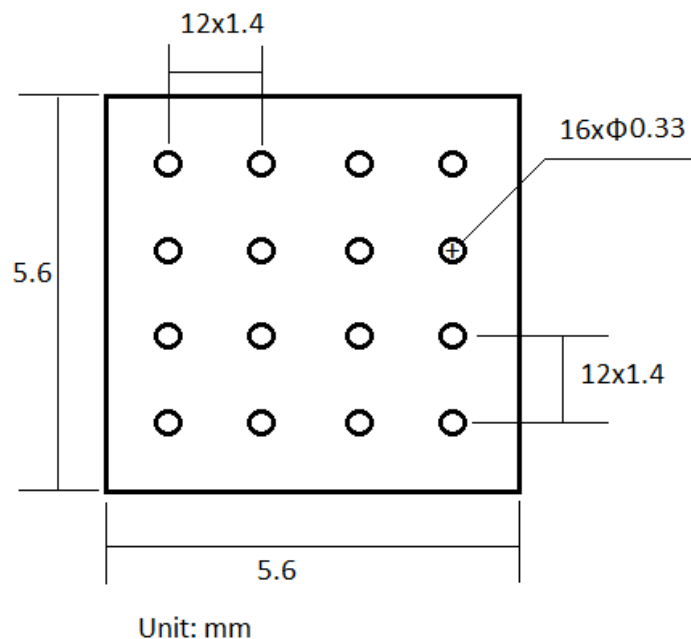
Where:  $V_f$  = maximum forward voltage of LED

## 13 Layout

### 13.1 Layout Guidelines

1. Place the decoupling capacitor near the VCC pin and GND plane.
2. Place the current programming resistor  $R_{iref}$  close to IREF pin and IREFGND pin.
3. Route the GND pattern as widely as possible for large GND currents. Maximum GND current is approximately 1.2A
4. Routing between the LED cathode side and the device OUTXn pin should be as short and straight as possible to reduce wire inductance.
5. The PowerPAD™ must be connected to GND plane because the pad is used as power ground pin internally, there will be large current flow through this pad when all channels turn on. Furthermore, this pad should be connected to a heat sink layer by thermal via to reduce device temperature. One suggested thermal via pattern is shown as below. For more information about suggested thermal via pattern and via size, see "PowerPAD Thermally Enhanced Package", SLMA002G.

### 13.2 Layout Example



## 14 器件和文档支持

### 14.1 商标

LGSE, PowerPAD are trademarks of Texas Instruments.  
All other trademarks are the property of their respective owners.

### 14.2 静电放电警告



这些装置包含有限的内置 ESD 保护。存储或装卸时，应将导线一起截短或将装置放置于导电泡棉中，以防止 MOS 门极遭受静电损伤。

### 14.3 术语表

[SLYZ022](#) — *TI* 术语表。

这份术语表列出并解释术语、首字母缩略词和定义。

## 15 机械封装和可订购信息

以下页中包括机械封装和可订购信息。 这些信息是针对指定器件可提供的最新数据。 这些数据会在无通知且不对本文档进行修订的情况下发生改变。 欲获得该数据表的浏览器版本，请查阅左侧的导航栏。

## 重要声明

德州仪器(TI)及其下属子公司有权根据 JESD46 最新标准,对所提供的产品和服务进行更正、修改、增强、改进或其它更改,并有权根据 JESD48 最新标准中止提供任何产品和服务。客户在下订单前应获取最新的相关信息,并验证这些信息是否完整且是最新的。所有产品的销售都遵循在订单确认时所提供的TI 销售条款与条件。

TI 保证其所销售的组件的性能符合产品销售时 TI 半导体产品销售条件与条款的适用规范。仅在 TI 保证的范围内,且 TI 认为有必要时才会使用测试或其它质量控制技术。除非适用法律做出了硬性规定,否则没有必要对每种组件的所有参数进行测试。

TI 对应用帮助或客户产品设计不承担任何义务。客户应对其使用 TI 组件的产品和应用自行负责。为尽量减小与客户产品和应用相关的风险,客户应提供充分的设计与操作安全措施。

TI 不对任何 TI 专利权、版权、屏蔽作品权或其它与使用了 TI 组件或服务的组合设备、机器或流程相关的 TI 知识产权中授予的直接或隐含权限作出任何保证或解释。TI 所发布的与第三方产品或服务有关的信息,不能构成从 TI 获得使用这些产品或服务的许可、授权、或认可。使用此类信息可能需要获得第三方的专利权或其它知识产权方面的许可,或是 TI 的专利权或其它知识产权方面的许可。

对于 TI 的产品手册或数据表中 TI 信息的重要部分,仅在没有对内容进行任何篡改且带有相关授权、条件、限制和声明的情况下才允许进行复制。TI 对此类篡改过的文件不承担任何责任或义务。复制第三方的信息可能需要服从额外的限制条件。

在转售 TI 组件或服务时,如果对该组件或服务参数的陈述与 TI 标明的参数相比存在差异或虚假成分,则会失去相关 TI 组件或服务的所有明示或暗示授权,且这是不正当的、欺诈性商业行为。TI 对任何此类虚假陈述均不承担任何责任或义务。

客户认可并同意,尽管任何应用相关信息或支持仍可能由 TI 提供,但他们将独立负责满足与其产品及其在应用中使用的 TI 产品相关的所有法律、法规和安全相关要求。客户声明并同意,他们具备制定与实施安全措施所需的全部专业技术和知识,可预见故障的危险后果、监测故障及其后果、降低有可能造成人身伤害的故障的发生机率并采取适当的补救措施。客户将全额赔偿因在此类安全关键应用中使用任何 TI 组件而对 TI 及其代理造成的任何损失。

在某些场合中,为了推进安全相关应用有可能对 TI 组件进行特别的促销。TI 的目标是利用此类组件帮助客户设计和创立其特有的可满足适用的功能安全性标准和要求的终端产品解决方案。尽管如此,此类组件仍然服从这些条款。

TI 组件未获得用于 FDA Class III (或类似的生命攸关医疗设备)的授权许可,除非各方授权官员已经达成了专门管控此类使用的特别协议。

只有那些 TI 特别注明属于军用等级或“增强型塑料”的 TI 组件才是设计或专门用于军事/航空应用或环境的。购买者认可并同意,对并非指定面向军事或航空航天用途的 TI 组件进行军事或航空航天方面的应用,其风险由客户单独承担,并且由客户独立负责满足与此类使用相关的所有法律和法规要求。

TI 已明确指定符合 ISO/TS16949 要求的产品,这些产品主要用于汽车。在任何情况下,因使用非指定产品而无法达到 ISO/TS16949 要求, TI 不承担任何责任。

	产品		应用
数字音频	<a href="http://www.ti.com.cn/audio">www.ti.com.cn/audio</a>	通信与电信	<a href="http://www.ti.com.cn/telecom">www.ti.com.cn/telecom</a>
放大器和线性器件	<a href="http://www.ti.com.cn/amplifiers">www.ti.com.cn/amplifiers</a>	计算机及周边	<a href="http://www.ti.com.cn/computer">www.ti.com.cn/computer</a>
数据转换器	<a href="http://www.ti.com.cn/dataconverters">www.ti.com.cn/dataconverters</a>	消费电子	<a href="http://www.ti.com.cn/consumer-apps">www.ti.com.cn/consumer-apps</a>
DLP® 产品	<a href="http://www.dlp.com">www.dlp.com</a>	能源	<a href="http://www.ti.com.cn/energy">www.ti.com.cn/energy</a>
DSP - 数字信号处理器	<a href="http://www.ti.com.cn/dsp">www.ti.com.cn/dsp</a>	工业应用	<a href="http://www.ti.com.cn/industrial">www.ti.com.cn/industrial</a>
时钟和计时器	<a href="http://www.ti.com.cn/clockandtimers">www.ti.com.cn/clockandtimers</a>	医疗电子	<a href="http://www.ti.com.cn/medical">www.ti.com.cn/medical</a>
接口	<a href="http://www.ti.com.cn/interface">www.ti.com.cn/interface</a>	安防应用	<a href="http://www.ti.com.cn/security">www.ti.com.cn/security</a>
逻辑	<a href="http://www.ti.com.cn/logic">www.ti.com.cn/logic</a>	汽车电子	<a href="http://www.ti.com.cn/automotive">www.ti.com.cn/automotive</a>
电源管理	<a href="http://www.ti.com.cn/power">www.ti.com.cn/power</a>	视频和影像	<a href="http://www.ti.com.cn/video">www.ti.com.cn/video</a>
微控制器 (MCU)	<a href="http://www.ti.com.cn/microcontrollers">www.ti.com.cn/microcontrollers</a>		
RFID 系统	<a href="http://www.ti.com.cn/rfidsys">www.ti.com.cn/rfidsys</a>		
OMAP应用处理器	<a href="http://www.ti.com/omap">www.ti.com/omap</a>		
无线连通性	<a href="http://www.ti.com.cn/wirelessconnectivity">www.ti.com.cn/wirelessconnectivity</a>	德州仪器在线技术支持社区	<a href="http://www.deyisupport.com">www.deyisupport.com</a>

邮寄地址: 上海市浦东新区世纪大道1568号, 中建大厦32楼邮政编码: 200122  
Copyright © 2014, 德州仪器半导体技术(上海)有限公司

**PACKAGING INFORMATION**

Orderable Device	Status (1)	Package Type	Package Drawing	Pins	Package Qty	Eco Plan (2)	Lead finish/ Ball material (6)	MSL Peak Temp (3)	Op Temp (°C)	Device Marking (4/5)	Samples
TLC5958RTQR	ACTIVE	QFN	RTQ	56	2000	RoHS & Green	NIPDAU	Level-3-260C-168 HR	-40 to 85	TLC5958	<a href="#">Samples</a>
TLC5958RTQT	ACTIVE	QFN	RTQ	56	250	RoHS & Green	NIPDAU	Level-3-260C-168 HR	-40 to 85	TLC5958	<a href="#">Samples</a>

(1) The marketing status values are defined as follows:

**ACTIVE:** Product device recommended for new designs.

**LIFEBUY:** TI has announced that the device will be discontinued, and a lifetime-buy period is in effect.

**NRND:** Not recommended for new designs. Device is in production to support existing customers, but TI does not recommend using this part in a new design.

**PREVIEW:** Device has been announced but is not in production. Samples may or may not be available.

**OBsolete:** TI has discontinued the production of the device.

(2) **RoHS:** TI defines "RoHS" to mean semiconductor products that are compliant with the current EU RoHS requirements for all 10 RoHS substances, including the requirement that RoHS substance do not exceed 0.1% by weight in homogeneous materials. Where designed to be soldered at high temperatures, "RoHS" products are suitable for use in specified lead-free processes. TI may reference these types of products as "Pb-Free".

**RoHS Exempt:** TI defines "RoHS Exempt" to mean products that contain lead but are compliant with EU RoHS pursuant to a specific EU RoHS exemption.

**Green:** TI defines "Green" to mean the content of Chlorine (Cl) and Bromine (Br) based flame retardants meet JS709B low halogen requirements of <=1000ppm threshold. Antimony trioxide based flame retardants must also meet the <=1000ppm threshold requirement.

(3) MSL, Peak Temp. - The Moisture Sensitivity Level rating according to the JEDEC industry standard classifications, and peak solder temperature.

(4) There may be additional marking, which relates to the logo, the lot trace code information, or the environmental category on the device.

(5) Multiple Device Markings will be inside parentheses. Only one Device Marking contained in parentheses and separated by a "~" will appear on a device. If a line is indented then it is a continuation of the previous line and the two combined represent the entire Device Marking for that device.

(6) Lead finish/Ball material - Orderable Devices may have multiple material finish options. Finish options are separated by a vertical ruled line. Lead finish/Ball material values may wrap to two lines if the finish value exceeds the maximum column width.

**Important Information and Disclaimer:**The information provided on this page represents TI's knowledge and belief as of the date that it is provided. TI bases its knowledge and belief on information provided by third parties, and makes no representation or warranty as to the accuracy of such information. Efforts are underway to better integrate information from third parties. TI has taken and continues to take reasonable steps to provide representative and accurate information but may not have conducted destructive testing or chemical analysis on incoming materials and chemicals. TI and TI suppliers consider certain information to be proprietary, and thus CAS numbers and other limited information may not be available for release.

In no event shall TI's liability arising out of such information exceed the total purchase price of the TI part(s) at issue in this document sold by TI to Customer on an annual basis.





**TAPE AND REEL INFORMATION**

**QUADRANT ASSIGNMENTS FOR PIN 1 ORIENTATION IN TAPE**


\*All dimensions are nominal

Device	Package Type	Package Drawing	Pins	SPQ	Reel Diameter (mm)	Reel Width W1 (mm)	A0 (mm)	B0 (mm)	K0 (mm)	P1 (mm)	W (mm)	Pin1 Quadrant
TLC5958RTQR	QFN	RTQ	56	2000	330.0	16.4	8.3	8.3	1.1	12.0	16.0	Q2
TLC5958RTQT	QFN	RTQ	56	250	180.0	16.4	8.3	8.3	1.1	12.0	16.0	Q2

**TAPE AND REEL BOX DIMENSIONS**


\*All dimensions are nominal

Device	Package Type	Package Drawing	Pins	SPQ	Length (mm)	Width (mm)	Height (mm)
TLC5958RTQR	QFN	RTQ	56	2000	367.0	367.0	38.0
TLC5958RTQT	QFN	RTQ	56	250	210.0	185.0	35.0

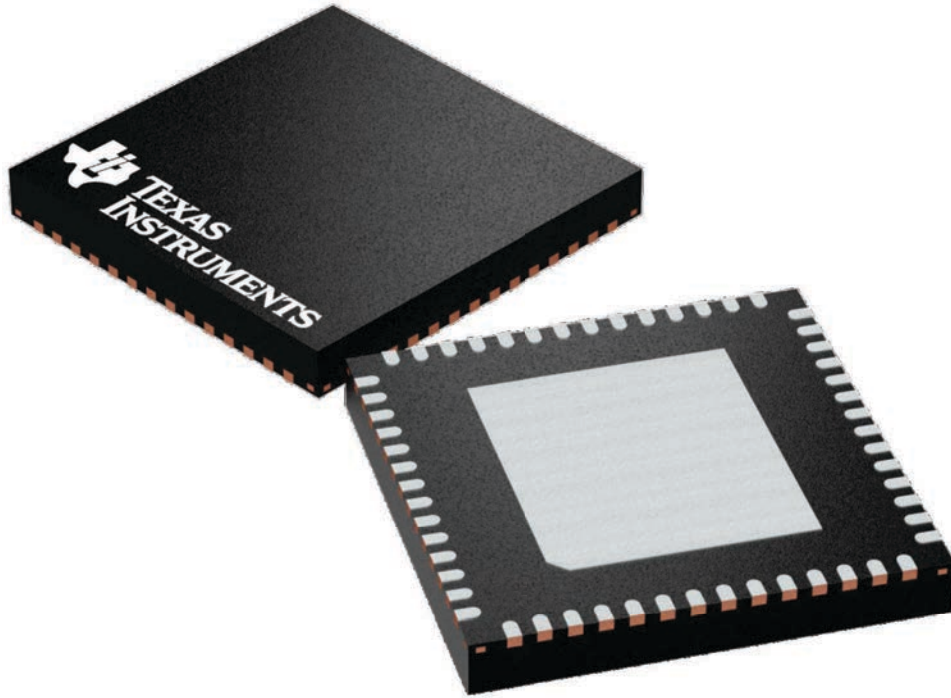
## GENERIC PACKAGE VIEW

**RTQ 56**

**VQFN - 1 mm max height**

8 x 8, 0.5 mm pitch

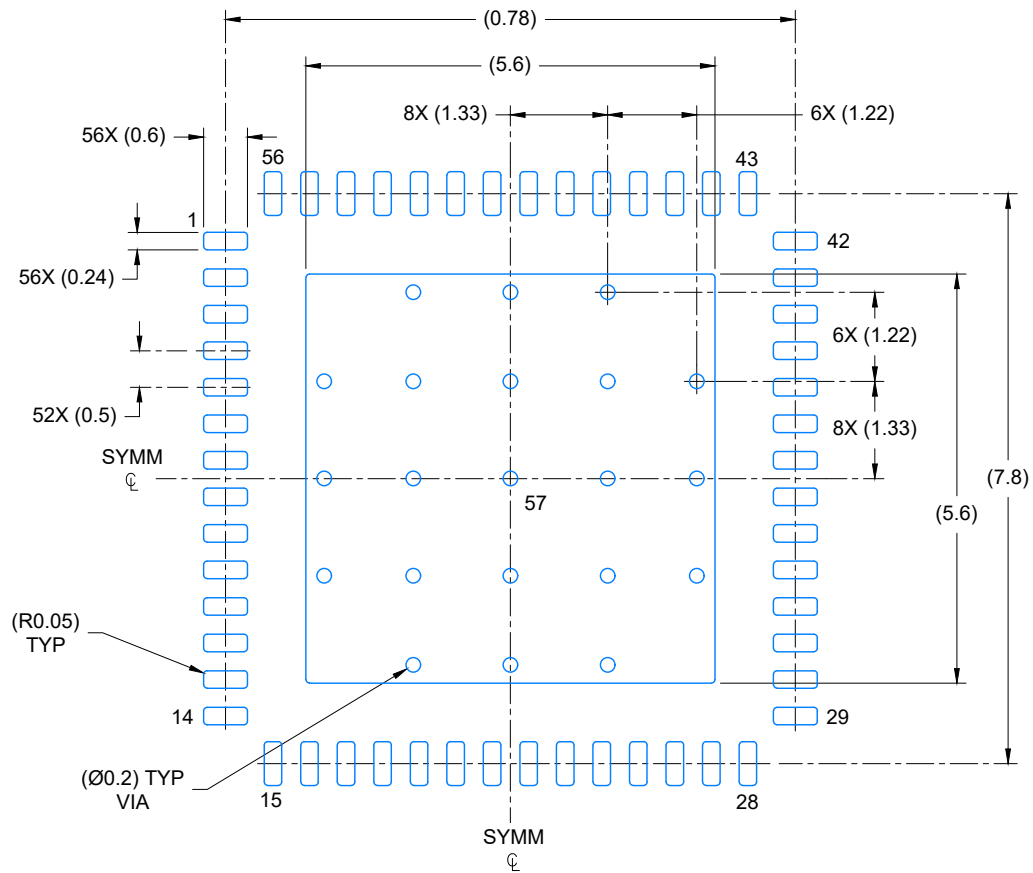
PLASTIC QUAD FLATPACK - NO LEAD



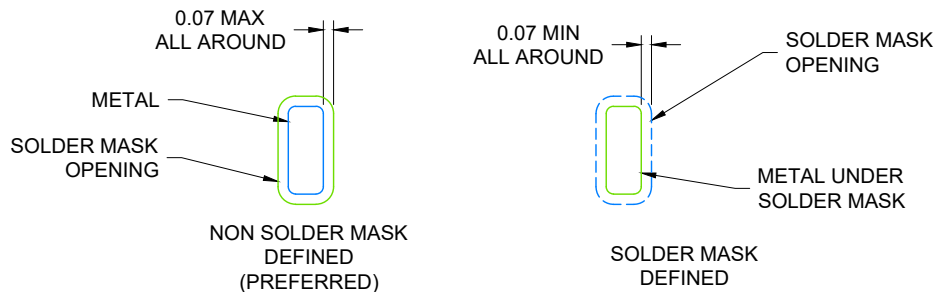
Images above are just a representation of the package family, actual package may vary.  
Refer to the product data sheet for package details.

4224653/A





LAND PATTERN EXAMPLE  
SCALE: 10X

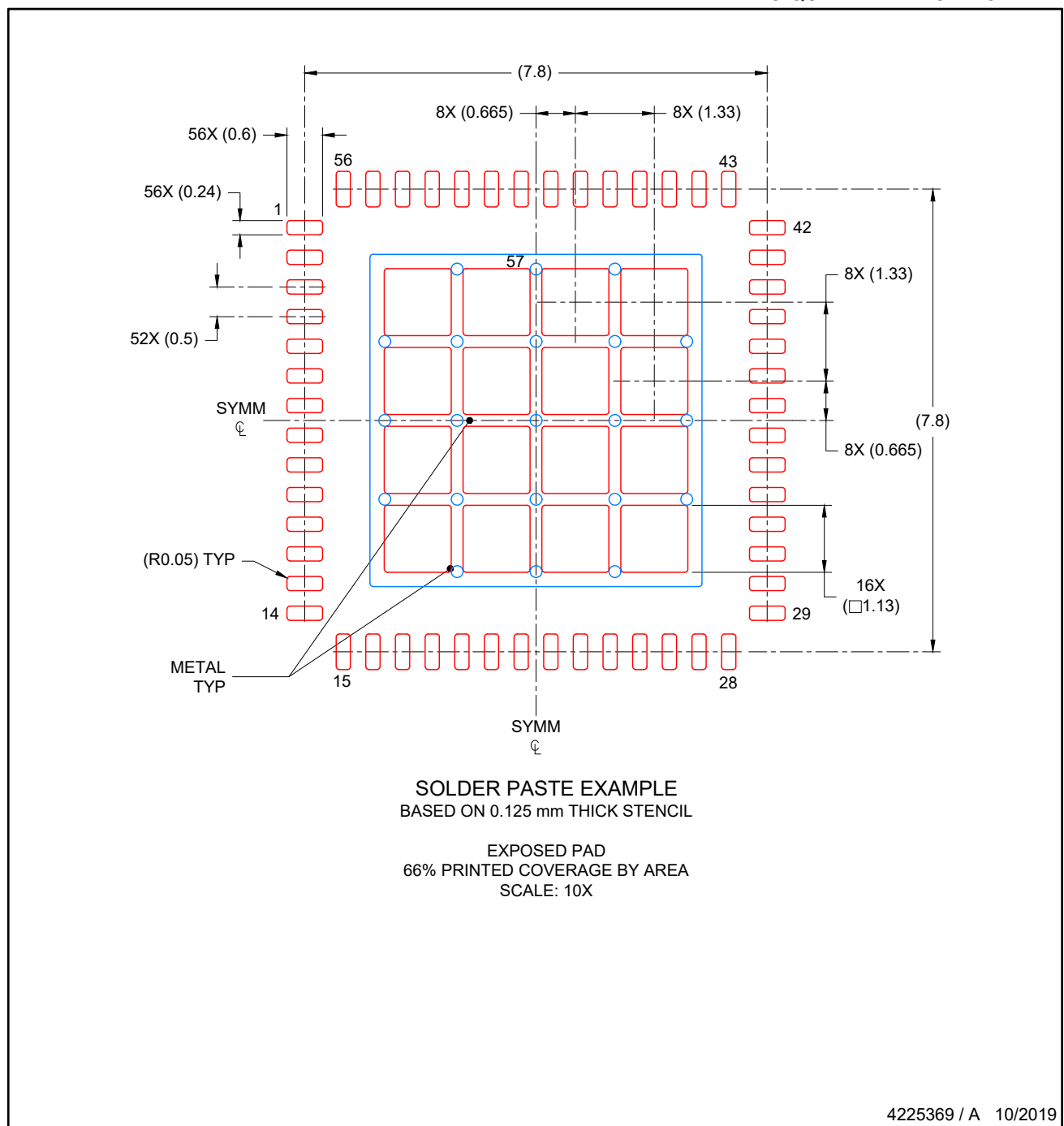


SOLDER MASK DETAILS

4225369 / A 10/2019

NOTES: (continued)

4. This package is designed to be soldered to a thermal pad on the board. For more information, see Texas Instruments literature number SLUA271 ([www.ti.com/lit/slua271](http://www.ti.com/lit/slua271)).
5. Vias are optional depending on application, refer to device data sheet. If any vias are implemented, refer to their locations shown on this view. It is recommended that vias under paste be filled, plugged or tented.



NOTES: (continued)

6. Laser cutting apertures with trapezoidal walls and rounded corners may offer better paste release. IPC-7525 may have alternate design recommendations..

## 重要声明和免责声明

TI 均以“原样”提供技术性及其可靠性数据（包括数据表）、设计资源（包括参考设计）、应用或其他设计建议、网络工具、安全信息和其他资源，不保证其中不含任何瑕疵，且不做任何明示或暗示的担保，包括但不限于对适销性、适合某特定用途或不侵犯任何第三方知识产权的暗示担保。

所述资源可供专业开发人员应用TI 产品进行设计使用。您将对以下行为独自承担全部责任：(1) 针对您的应用选择合适的TI 产品；(2) 设计、验证并测试您的应用；(3) 确保您的应用满足相应标准以及任何其他安全、安保或其他要求。所述资源如有变更，恕不另行通知。TI 对您使用所述资源的授权仅限于开发资源所涉及TI 产品的相关应用。除此之外不得复制或展示所述资源，也不提供其它TI 或任何第三方的知识产权授权许可。如因使用所述资源而产生任何索赔、赔偿、成本、损失及债务等，TI 对此概不负责，并且您须赔偿由此对TI 及其代表造成的损害。

TI 所提供产品均受TI 的销售条款 (<http://www.ti.com.cn/zh-cn/legal/termsofsale.html>) 以及 [ti.com.cn](http://www.ti.com.cn) 上或随附TI 产品提供的其他可适用条款的约束。TI 提供所述资源并不扩展或以其他方式更改TI 针对TI 产品所发布的可适用的担保范围或担保免责声明。

邮寄地址：上海市浦东新区世纪大道 1568 号中建大厦 32 楼，邮政编码：200122

Copyright © 2020 德州仪器半导体技术（上海）有限公司