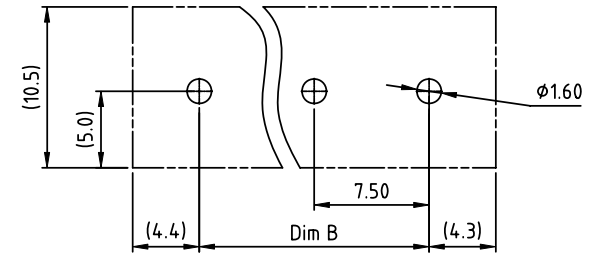
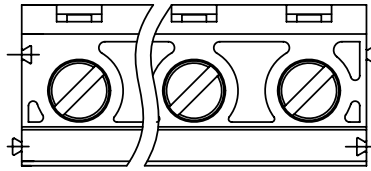
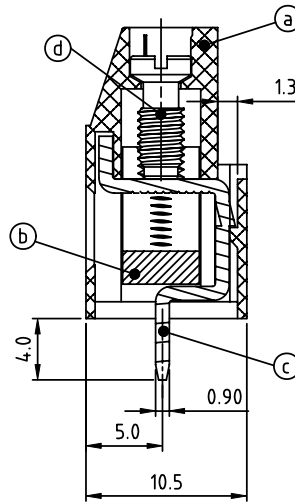
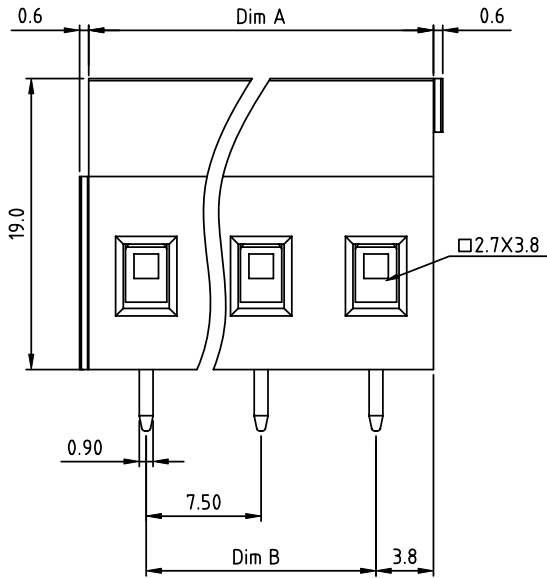


PRODUCT NUMBER	PITCH
VJxx41x500J0G	7.50 mm



RECOMMENDED P.C.B LAYOUT
TOP VIEW



Material:

- Item (a) Terminal housing: Thermoplastic (UL 94V-0)
- Item (b) Clamp: Brass Ni plated
- Item (c) Solder pin: Brass Tin plated
- Item (d) Terminal screw: Steel Zinc plating"-slot type

Electrical cULus / VDE

- Voltage rating : 300VAC / 750V
- Current rating : 20A / 24A
- Wire range : 0.2-2.5mm²
- Solid wire(AWG) : 12-30
- Stranded wire(AWG) : 12-30
- Torque : 3.5 Lb-In / 0.5 N.m
- Screw: M3
- Wire strip length: 6-7mm
- Withstanding Voltage: 1.6KV / 3KV
- Operating temperature: -40°C to +115°C
- Soldering temperature: 260°C±5°C/5 Sec
- Safety Approval:

DIMENSION

Dim A	N×7.5
Dim B	(N-1)×7.5

N=Number of poles

Poles	Tolerance
4p-8p	±0.20
9p-12p	±0.30
13p-16p	±0.40

PART NO.: VJ xx 4 1 x 5 00J0 G

Solid block	0	Black (RAL9005)	RoHS compliant (lead<4%) In copper Alloy
No. of poles	2	Red (RAL3001/D)	
04 4 poles	3	Orange(RAL2011/P)	
05 5 poles	4	Yellow(RAL1018/A)	
... ..	5	Green(RAL6018/T)	
16 16 poles	6	Blue (RAL5015/A)	
	8	Grey(RAL7035/D)	
	9	White(RAL1102)	
	C	Green(RAL6018/U)	

mat'l. code		surface ASME Y14.5	tolerance ASME Y14.5	projection	product family TERMINAL BLOCK
ltr	ecn no	dr	date		title
				MM	TERMINAL BLOCK
				scale	Rising Clamp, 180D Wire Inlet, Solid Block
		dr	EVIN ZHONG	040914	dwg no
		enr	EVIN ZHONG	040914	sheet 1 of 1
		chr	HANKE FENG	040914	size
		appd	SHI JUN	040914	A4
					VJxx41x500J0G
					type
					CUSTOMER Drawing
sheet index	revision	A			
	sheet	1			