

# F3000/3100/3200/3400/3500 RFI Filters



## Specifications:

**Rated Voltage:** 250VAC Maximum - 50/60 Hz

**Rated Current:** 115VAC 250VAC  
3A 3A  
6A 6A

**Current Overload:** 6X for 8 seconds

**Hi-Pot Test (1 min):**

Line to Ground 1500VAC  
Line to Line 1768VDC

**Insulation Resistance:**  $9 \times 10^9 \Omega$  at 100VDC

**Ambient Temperature:** 40°C Max at rated current

**Humidity Range:** 0% to 95% R.H.

**Termination:**

A: QC – Quick Connect  
C: IEC Receptacle

**Maximum Leakage Current:**

Each Line to Ground **F3000 Series**  
115VAC, 60Hz: 2  $\mu$ A  
250VAC, 50Hz: 5  $\mu$ A

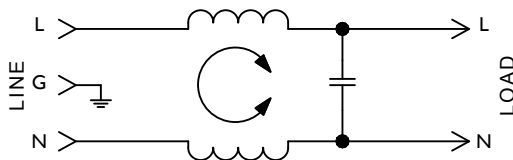
**Agency Approvals:**



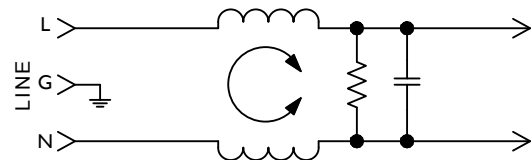
## Features:

- Designed to Meet UL544 Specification for Medical and Dental Equipment. Available to UL/IEC 60601 Standard
- F3400/F3500 Have Enhanced Differential Mode Performance
- Effective in Other Low-Leakage Current Applications

**F3000/F3100/F3200 Series  
Simplified Schematic**



**F3400/F3500 Series  
Simplified Schematic**



Nominal Current Rating	Part Number	Termination Line/Load	MINIMUM INSERTION LOSS - dB (50 ohm Circuit)						
			MODE	Frequency - MHz					
				.15	.50	1.0	5.0	10	30
3A	F3400CA03	IEC/QC	Common	22	32	35	30	25	20
	F3500CA03	IEC/QC	Differential	8	18	24	35	35	35
6A	F3000AA06	QC/QC	Common	10	20	23	25	23	15
	F3100CA06	IEC/QC	Differential		2	8	32	34	23
	F3200CA06	IEC/QC							
	F3400CA06	IEC/QC	Common	15	21	24	24	22	26
	F3500CA06	IEC/QC	Differential	8	18	24	35	35	35

NOTE: Other combinations of terminals may be specified on special order.

Dimensions are in inches and millimeters unless otherwise specified. Values in parentheses are metric equivalents.



**Curtis Industries**  
A Division of Powers Holdings, Inc.

1-800-657-0853

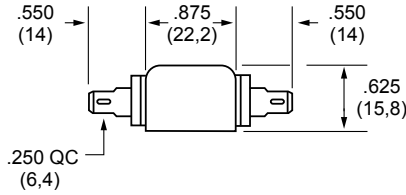
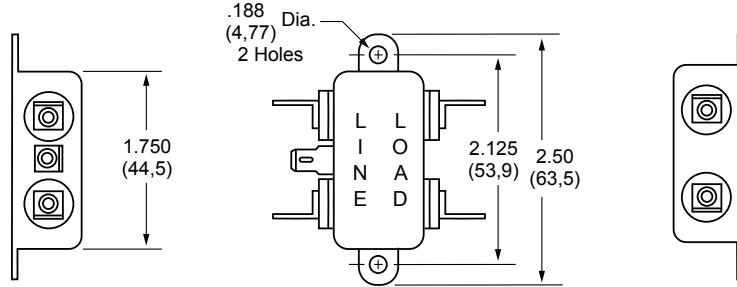
General Purpose Filtered Modules

MEDICAL FILTERS

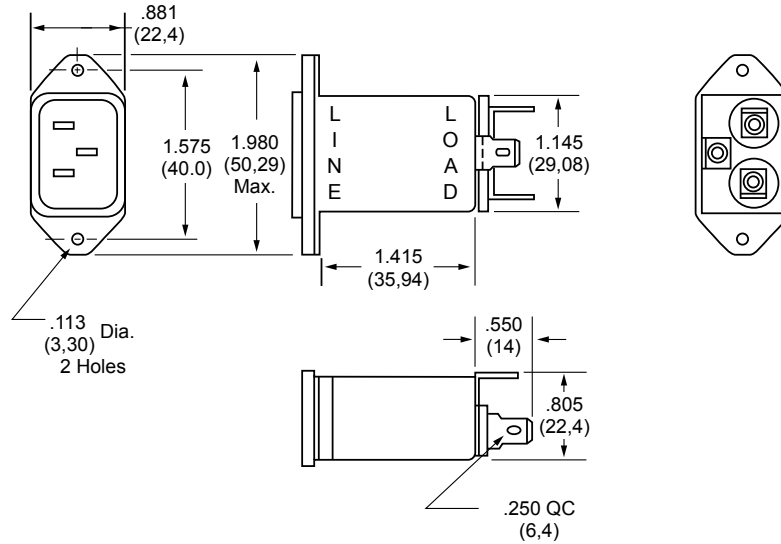
# F3000/3100/3200/3400/3500 RFI Filters (continued)

General Purpose Filtered Modules

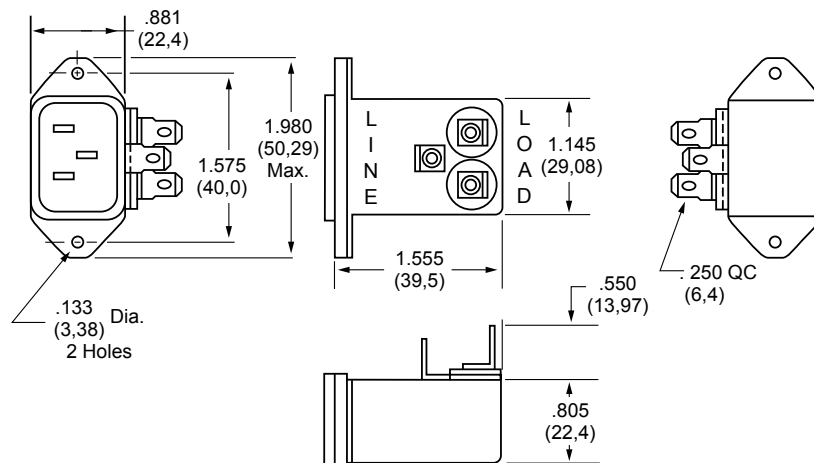
**F3000AA**  
(6Amp)  
Dimensions



**F3100CA**  
(6Amp)  
**F3400CA**  
(3 and 6Amp)  
Dimensions



**F3200CA**  
(6Amp)  
**F3500CA**  
(3 and 6Amp)  
Dimensions



MEDICAL FILTERS

