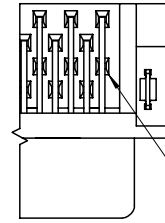
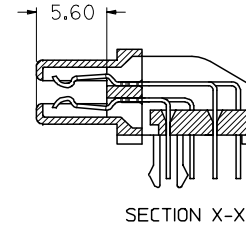
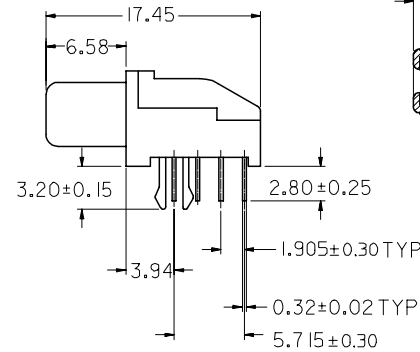
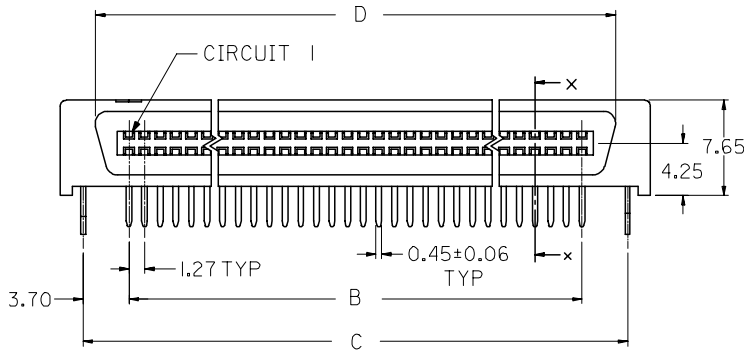
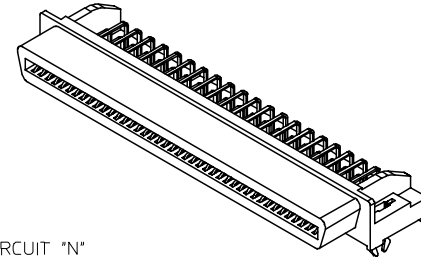


FOR CIRCUIT SIZES 68 AND 80 ONLY



FOR CIRCUIT SIZE 50 ONLY



NOTES:

1. MATERIAL: HOUSING -- HIGH TEMP. THERMOPLASTIC, UL94-V0
TERMINALS -- COPPER ALLOY
2. PLATING:
 - 2A 0.75µM MIN. GOLD IN SELECTIVE CONTACT AREA AND
2.5µM MIN. TIN IN SOLDER TAIL AREA, BOTH
OVER 1.27µM MIN. NICKEL.
3. ASSEMBLY MATES WITH MOLEX P/N 71661-****.
4. RECOMMENDED P.C. BOARD THICKNESS IS 1.60MM.
5. PRODUCT SPEC. NO.: PS-87552-006
6. SEE TABLE ON SHEET 2 FOR ASSEMBLY PART NUMBERS.

REVISED	DESCRIPTION
EC NO: S2008-0347	2007/11/12
DRWN:SKANG	2007/11/12
CHKD:ATSEE	2007/11/12
APPR:MLONG	2007/11/14
H3	REV

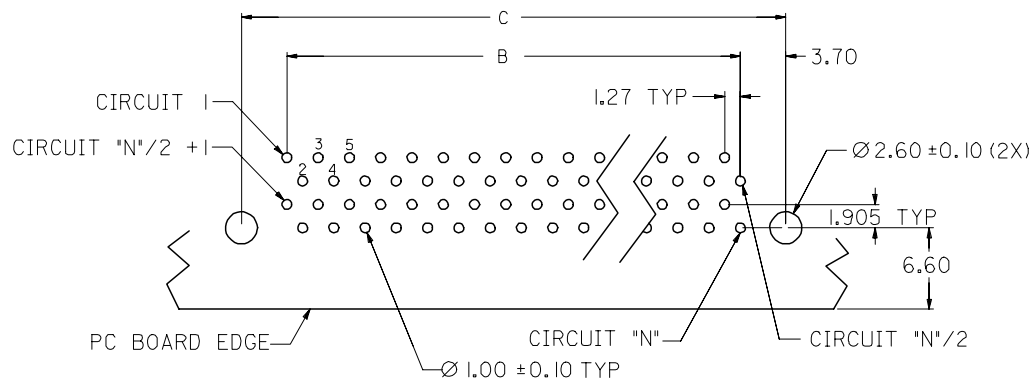
QUALITY SYMBOLS
▽=0
▽C=0

GENERAL TOLERANCES (UNLESS SPECIFIED)	mm	INCH
4 PLACES	± ---	± ---
3 PLACES	± ---	± ---
2 PLACES	± 0.3	± ---
1 PLACE	± ---	± ---
ANGULAR ± 3 °		
DRAFT WHERE APPLICABLE MUST REMAIN WITHIN DIMENSIONS		

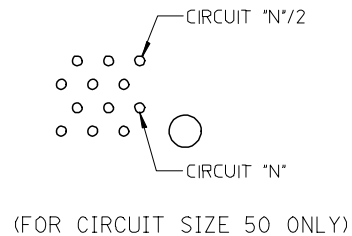
DIMENSION STYLE		SCALE	DESIGN UNITS	THIRD ANGLE PROJECTION
MM ONLY		NTS	METRIC	
DRAWN BY	DATE	TITLE		
DS0H	1997/04/01	EBBI, 1.27MM PITCH RECEPTACLE, R/A		
CHECKED BY	DATE			
KCL ING	1997/05/06			
APPROVED BY	DATE			
SKT0H	1997/05/08			
MATERIAL NO.		DOCUMENT NO.	SHEET NO.	
SEE TABLE		SD-87552-007	1 OF 2	

MOLEX INCORPORATED	
THIS DRAWING CONTAINS INFORMATION THAT IS PROPRIETARY TO MOLEX INCORPORATED AND SHOULD NOT BE USED WITHOUT WRITTEN PERMISSION	

	10	9	8	7	6	5	4	3	2	1
	D	C	B	A	CKT SIZE	ASSEMBLY PART NUMBER				
F	36.02	37.88	30.48	41.70	50	87552-0507				
	47.45	49.31	41.91	53.13	68	87552-0687				
	55.07	56.93	49.53	60.75	80	87552-0807				



RECOMMENDED PC BOARD LAYOUT
COMPONENT SIDE
(FOR CIRCUIT SIZES 68 AND 80 ONLY)



REVISED	EC NO: S2008-0347	2007/11/12
DRWN:SKANG	CHKD:ATSEE	2007/11/12
APPR:MLONG		2007/11/14
REV	DESCRIPTION	
H3		

QUALITY SYMBOLS	$\nabla=0$
	$\nabla C=0$

GENERAL TOLERANCES (UNLESS SPECIFIED)	
	MM ONLY
4 PLACES	\pm ---
3 PLACES	\pm ---
2 PLACES	± 0.3
1 PLACE	\pm ---
ANGULAR $\pm 3^\circ$	
DRAFT WHERE APPLICABLE MUST REMAIN WITHIN DIMENSIONS	

DIMENSION STYLE	
MM ONLY	
DRAWN BY	DATE
DS0H	1997/04/01
CHECKED BY	DATE
KCLING	1997/05/06
APPROVED BY	DATE
SKTOH	1997/05/08
MATERIAL NO.	
SEE TABLE	

SCALE	DESIGN UNITS	THIRD ANGLE PROJECTION
NTS	METRIC	
TITLE		
EBBI, 1.27MM PITCH RECEPTACLE, R/A		
MOLEX INCORPORATED		
DOCUMENT NO.	SHEET NO.	
SD-87552-007	2 OF 2	
THIS DRAWING CONTAINS INFORMATION THAT IS PROPRIETARY TO MOLEX INCORPORATED AND SHOULD NOT BE USED WITHOUT WRITTEN PERMISSION		